



# Meridian Health Nursing Achievements 2008



*Building a Healthy America*



# Table of Contents



<b><i>Dear Colleagues</i></b>	1
<b><i>New Magnet Model: Good Isn't Good Enough</i></b>	2
<b><i>Transformational Leadership</i></b>	
New Jersey Governor's Nursing Merit Award	3
AACN Circle Of Excellence Award	5
C.A.R.E. Award	6
Awards and Honors	7
<b><i>Structural Empowerment</i></b>	
Nursing School Becomes A Reality	9
Presentations	10
Community Service and Outreach	15
International Service	20
Educational Achievements	21
<b><i>Exemplary Professional Practice</i></b>	
New Opportunities for Advancement through the C.A.R.E. Program	22
Clinical Advancement and Recognition of Excellence	22
Certifications	24
Professional Organizations	27
<b><i>New Knowledge, Innovations, and Improvements</i></b>	
Meridian Health Institute for Evidence-Based Care	31
Publications	32
Research	34
<b><i>Foundation</i></b>	36

This annual report was prepared by Meridian  
Corporate Communications and Marketing in  
collaboration with the Ann May Center for Nursing.

## Dear Colleagues



Regina Foley, R.N., MBA, CHE  
Vice President of Nursing & Chief Nurse Executive  
Ocean Medical Center



Richard Hader, R.N., Ph.D., FAAN, CNE, CPHQ  
Senior Vice President & Chief Nursing Officer  
Meridian Health and  
Jersey Shore University Medical Center



Lori Colineri, R.N., MSN  
Acting Vice President of Nursing & Chief Nurse Executive  
Riverview Medical Center

Nurses continue to want to work for Meridian! In fact, we have more qualified nurses applying for positions at Meridian than we have positions to fill. The Magnet culture of excellence is deeply embedded in the organization and it is shown in the care that is delivered to patients each day. Meridian nursing is Magnetized because we employ over 2,000 of the finest professionals in the world. Nurses from around the state and the country want to work here because we have developed the finest reputation for professional development and standards of excellence! Everyone wants to work with the best, brightest, and most committed individuals who are passionate about their profession and quality patient care.

2008 marks the 10<sup>th</sup> anniversary of obtaining Magnet. Since that time, we have achieved even greater professionalism as 60% of us are nationally certified in our area of clinical expertise! How have we achieved such great outcomes? It is because we value professional excellence, which can only be achieved through ongoing professional development and raising the expectations for all to achieve. Soon we will be 100% nationally certified, which will authenticate our commitment to excellence to each other and to the communities we serve.

This year we admitted the first class to the Georgian Court-Meridian Health School of Nursing, which is a generic Bachelor of Science program in Nursing. Thirty-eight students are in the program and will shortly be starting their clinical experiences within one of our facilities. We look forward to working with these highly talented students as we continue to ensure that nursing care will always be the priority within Meridian.

Nurses at Meridian continue to be very satisfied with their chosen work area as evidenced by our outstanding results from the survey administered through the National Database of Nursing Quality Indicators. In fact, the data illustrates that in most work domains, Meridian nurses are more satisfied than over 90% of their colleagues.

Building upon our career development portfolio for Meridian nurses, we added two new ways to attain Scholar status through the Clinical Advancement and Recognition of Excellence program. Over 40 of our colleagues now participate in either the Quality Scholar or Geriatric Scholar programs. These nurses have received specialized education in these subspecialties and are advocates for advancing the delivery of evidence-based care at the bedside, adding a new dimension to the already high caliber of Meridian nurses.

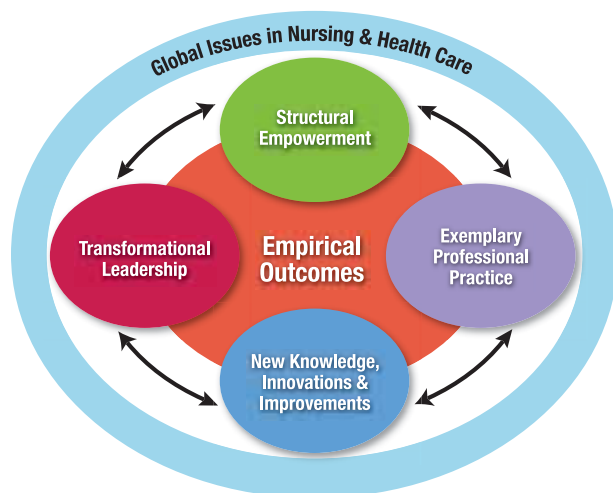
We congratulate all of you on your fine accomplishments and look forward to the new year ahead as we continue to plan, develop, and implement processes that will continue to improve patient care through the use of scientifically proven evidence-based care protocols.

# New Magnet Model: Good Isn't Good Enough



The American Nurses' Credentialing Center (ANCC) Magnet Commission launched a new Magnet model this year to ensure that Magnet hospitals continue to lead the reformation of health care and move nursing practice forward in the future. The ANCC wants to ensure that Magnet environments are catalysts in the development of new knowledge and globally share their expertise. Magnet organizations are expected to be flexible, dynamic, and key drivers and leaders in this reformation.

The 14 Forces of Magnetism have now been restructured into five major components: Structural Empowerment, Transformational Leadership, Exemplary Professional Practice, New Knowledge, Innovations and Improvements, and Empirical Outcomes. These components are needed to support the Global Issues in Nursing and Health Care.



© 2008 American Nurses Credentialing Center. All rights reserved.  
Reprinted with the permission of the American Nurses Credentialing Center.

*Structural Empowerment* refers to how well the organization and nursing strategically plan, structure, and implement policies and programs. Strong influence by staff nurses is essential in key development committees and structures, such as professional practice. Personal policies need to be fairly administered and innovative to meet the challenges of professional caregivers. Promotional opportunities such as Meridian Health's Clinical Advancement and Recognition of Excellence program need to be available to ensure ongoing career development.

*Transformational Leadership* pertains to how well nurses at all levels of the organization lead people where they need to go in order to meet the demands of the future. Nursing needs to be innovative, visionary, and develop a structure to always improve performance. Programs such as the OFFER program, a patient-centered care philosophy, and our commitment to cultural diversity are all examples of how Meridian Health nurses lead.

*New Knowledge, Innovations, and Improvements* are linked to the organization's ability to redesign current systems and practices to be successful in the future. Bedside patient reporting is one way that we at Meridian are meeting the needs of today's well-informed consumer of health care. Our practice model needs to continue to be dynamic as health care continues to transform itself because of changes in patient demographics and expectations.

*Professional Practice* is how well we communicate with other health care providers and work as an integrated health care system. Our model of patient- and family-centered care is based upon effective, collaborative, and competent care — key drivers to ensuring the consistent delivery of expert care to patients.

The new model emphasizes the establishment of empirical outcomes that rely on benchmark data that would allow comparisons with best practices. Our 40 new Quality Scholars are planning, implementing, and monitoring the results of changes in clinical practice. These projects serve as the infrastructure to helping us keep patient care outcomes at the highest level possible.

Nursing at Meridian Health is well-situated to meet the new and more expansive criteria for Magnet designation. Through teamwork, innovation, and a culture of excellence, Meridian nursing will continue to be a Magnet organization.



## **New Jersey Governor's Nursing Merit Award**

If commitment to the highest standards of patient care is the hallmark of advanced practice nursing, then Rebecca Graboso, R.N., is the epitome of that commitment.

Rebecca seized the opportunity to put all of her clinical skills to work when she was asked to develop the Acute Stroke Program at Riverview Medical Center. She leads the acute stroke response team that performs initial assessments of patients presenting with stroke and for other cerebrovascular emergencies. In her role, Rebecca has garnered the respect of physicians, staff nurses, and members of the interdisciplinary team along the continuum of care. It was through her leadership and commitment in meticulously implementing stroke standards that Riverview was designated a Primary Stroke Center by The Joint Commission in April of 2007, just a little over a year after she developed the program.

When Rebecca took on this role, she conducted an in-depth needs assessment which indicated there were many issues with current practices at Riverview in stroke care. She found that the standing orders were outdated, the existing policies and protocols were not a reflection of the current stroke standards of care, and the staff was inadequately trained. Rebecca researched best practices for stroke care and also reviewed current literature, translating it into evidence-based clinical practice guidelines, policies, and procedures to comply with the stroke standards of The Joint Commission, the Brain Attack Coalition, and state regulations for stroke centers. She also developed teaching tools and educated each and every team member in the Emergency Department, the Intensive Care and Stroke Units, and Inpatient Rehab to make sure that they had the skills needed to competently care for the stroke patient.

Due to her relentless efforts and leadership, Riverview has a 24/7 stroke neurologist on call to respond to stroke patients in the ED and on nursing units. She has collaborated with both the Lab and Diagnostic Imaging Departments to ensure that the stroke program is meeting the recommended turnaround times for CT and laboratory results based on The Joint Commission standards. She organized and also chairs a Stroke Outcome Committee which has helped to establish turnaround times for important interventions for stroke patients. This committee determined that patients need to be seen within 10 minutes by the physician, and that after 24 hours, a physical therapy or rehab consultation and a swallowing evaluation must be initiated. As a result, she has arranged for speech therapy to conduct swallowing assessments at the bedside before oral medications or fluids to prevent aspiration, and the turnaround times for these procedures improved tremendously.

An ardent patient advocate, Rebecca continually looks for ways to increase patient input into their care, and has worked tirelessly to make patient education more accessible. She educates all patients she sees and by implementing secondary stroke prevention practices with blood pressure management, lipid management, and lifestyle modifications through individualized patient and family education, it has made a significant impact on the improvement of outcomes in acute stroke patients. These efforts have prevented unnecessary readmissions, resulting in cost savings for both the patient and the hospital.

Rebecca brings energy and passion to her role as an advanced practice nurse. She has broken down barriers and has formed strong relationships with physicians and the interdisciplinary team who now fully appreciate the knowledge and skills that she brings to her position, opening the door for other APNs to follow in her footsteps.



Rebecca Graboso, R.N., MSN, APN-C, CCRN  
New Jersey Governor's Nursing Merit Award  
Advanced Practice Nurse



Phyllis Begyn, R.N., BSN, OCN, CNA  
New Jersey Governor's Nursing Merit Award  
Nurse Manager

## New Jersey Governor's Nursing Merit Award

When Phyllis Begyn, R.N., nurse manager of 4 East at Ocean Medical Center, started her career as a graduate nurse over 25 years ago, the first position she was offered was on an oncology unit. Oncology nursing soon became Phyllis's passion, which has led her to be a powerful advocate for both patients and her staff.

Over her career, Phyllis has worked in the inpatient and outpatient settings and has garnered expertise in all areas of oncology nursing. It is this depth and breadth of experience that she brings to her current role of nurse manager for the Inpatient and Outpatient Oncology Units at Ocean. She provides nursing leadership in the area of her responsibility of these challenging units and embraces a participatory management style that combines shared governance with trust and empowerment of her staff. Phyllis's leadership style is characterized by her own sense of accountability for excellent outcomes, and her strong belief in involving staff in decision making about their units.

Under Phyllis's leadership, both the Inpatient and Outpatient Oncology Units have achieved high scores in patient satisfaction, with Press Ganey scores consistently in the 90-99<sup>th</sup> percentile. She is a highly visible leader who makes rounds frequently on all patients to assure that they are receiving the care that they need and deserve, and that all of their concerns are addressed. Phyllis truly believes that patients and families who are dealing with a cancer diagnosis are best served when they have the information and support that they need to make sound decisions. To this end, she supported the installation of an oncology information kiosk from the National Cancer Institute located on the unit. Now patients, families, and staff have 24-hour access to evidence-based information related to their diagnosis and care, which empowers them to seek the best possible treatment and to ask educated questions of their care providers.

Phyllis's leadership is limited not only to the Inpatient Unit, but is clearly evident in the care of oncology patients receiving ambulatory care. She was instrumental in transitioning the Outpatient/Ambulatory Oncology Unit from a one-room suite to an expanded 12-chair infusion center staffed with oncology-certified nurses. This center includes state-of-the-art equipment and is located in close proximity to the Radiation Oncology Unit, allowing patients with non-oncology diagnoses to receive treatment in a specialized environment supportive of their needs.

Phyllis supports a shared leadership model on the units that she manages, and feels strongly that this model best supports staff nurses in extending their influence regarding decisions affecting their practice, their work environment, and their professional development. Each nurse on Phyllis's unit belongs to a unit council of their choice that is responsible for improving outcomes on the unit. The nurses meet monthly or as needed, track their own indicators, research best practice, and are responsible for implementing a performance improvement plan. On the last Magnet designation visit, Phyllis and her unit were specifically cited by the site appraisers as an example of Magnet excellence.

Phyllis is very supportive of the needs of her nursing staff and understands that listening to their concerns and improving the environment where they practice needs to be a top priority. She has been a strong supporter for many of the staff's research and evidence-based practice projects. She also consistently supports the clinical nurse specialist in her role of integrating research at the bedside, and flexes staff so that they may be involved with the Nurse Research Council, and attend shared governance meetings which focus on research-based projects.

All who get to know Phyllis come to recognize that she is a true example of excellence in the practice of oncology nursing management.



## **American Association of Critical-Care Nurses (AACN) Circle of Excellence Award**

A real team player. Passionate. Goal-oriented. Dedicated to her profession.

These are just a few words that describe the work style and dedication of Sharon Jones, R.N., Critical Care Nurse Educator at Ocean Medical Center.

Sharon approaches each team member as an individual and has an innate ability to recognize what will motivate that person and what they need to take their practice to the next level. Whether it is with a new R.N. or an intensivist, Sharon is able to communicate her message while championing a collaborative work environment. Her belief in the utilization of nursing research and evidenced-based practice to promote positive clinical outcomes and standards for nursing practice are testaments to her character and professional skills.

Sharon often comes in on off hours to assist with troubleshooting or to ensure transition of a critical patient receiving a new treatment modality from one shift to the next — always making sure the next shift is confident before she leaves. And, when a physician requests a treatment modality not yet utilized, Sharon is at the frontline, guiding the bedside nurse through the process, ensuring clinical competency, and striving for an optimal patient outcome. “As technology advances and acuity increases many nurses are fearful of new therapies, but not the nurses on our unit,” says Marie Foley-Danecker, MSN, R.N., CCRN, CNA, Critical Care Nurse Manager at Ocean. “Sharon’s enthusiasm for learning, teaching, and patient advocacy is infectious.”

Sharon’s passions for quality and education are also evident in her leadership of the Patient Education Committee and CCRN Study Group. In her work with the hospital’s Shared Governance Committee, Sharon has empowered the CARE Scholars to assist in monitoring team member clinical competency throughout the year. These scholars then sign off on their fellow team members on demonstration of competency or refer the person to Sharon for review. The arrangement has been nothing but positive, and team members feel empowered over their practice. This was evident when Ocean’s ICU participated in the NJHA ICU Collaborative Culture of Safety Survey. Of 31 ICUs in New Jersey, Ocean’s ICU had the highest response rate for the question, “During emergency situations, my performance is not affected by working with inexperienced or less capable personnel.”

Sharon believes in supporting the professional development of her team members, and can often be seen assisting them in developing evidence-based practice projects and CARE Applications, trialing new products, or steering Master Clinician Projects. She promotes health and the nursing profession at every turn, even volunteering locally to educate elementary students on the importance of hand washing and the effects a healthy lifestyle has on the heart and lungs, and attending high school career events to champion nursing as a career.

Sharon possesses an innate ability to reach people, and is always an advocate for her patients, their families, and her staff.



Sharon Jones, R.N., MS, C, CCRN  
Elsevier - AACN Excellence in  
Education Award  
Critical Care Nurse Educator



Patricia Lucarelli, R.N., MSN, APN-C, CPNP  
New Jersey State Nurses Association  
C.A.R.E. Award  
Clinical Practice

## **New Jersey State Nurses Association C.A.R.E. Award**

Patricia Lucarelli, R.N., approaches every patient with the same thought, “What would I need/want if I were in his/her shoes?”

As the nurse practitioner of the Jane H. Booker Family Health Center of Jersey Shore University Medical Center, Patricia serves as a role model for staff development and nurse practitioner students, and sets a high level of expectation for staff participation in research projects to improve the delivery of primary care to an underprivileged and diverse pediatric population. As an administrator in a busy health care environment, Patricia has been an invaluable resource in terms of her wide range of knowledge in pediatric research, policy development, staff growth, physician relations, and group dynamics.

In her nurse practitioner role at the Family Health Center, she has captured the trust of many adolescent patients and their parents, a feat that is often hard to accomplish. Her mild mannerism and advocacy style has allowed her to impart a sense of positive health promotion to teens and their parents, in the hopes that this will encourage teens to make healthy choices when faced with tough, life-altering decisions. “My door is always open and my direct phone line is made available for any teen who has a question or any parent who needs to speak with me regarding their child’s health,” says Patricia.

Last year, Meridian’s Ambulatory Nursing Council sponsored its first major nursing conference on ambulatory care nursing for the region. Patricia was not only instrumental in developing and contributing to the planned curriculum, but also served as a speaker for two major topics: *Seizures in the Pediatric Patient*, and *Red Flag Telephone Management in Ambulatory Care*. Each conference participant raved about her unique, informative, and professional presentation.

Patricia is involved in a multitude of professional organizations, exemplifying her willingness to become fully engaged in continual efforts to improve the health and well-being of children in many different settings. She has served as a clinical expert in child maltreatment among other roles in the National Association of Pediatric Nurse Practitioners. On the regional and state level, she participated in the development of the Regional Pediatric Plan for Monmouth and Ocean counties, a document submitted for approval through the New Jersey Department of Health and Senior Services. She has also coordinated quality assurance activities and standards development for the Child Care Health Consortium in New Jersey, and has presented more than 300 child health training programs and seminars locally, statewide, and nationally.

As an instructor for nurse practitioner students, she provides the foundation for students to develop their full potential, carefully guiding them through the assessment process, and demonstrating effective communication techniques with patients and families. She utilizes evidence-based practice in her approach to health promotion, disease management, and injury prevention.

Patricia is truly an amazingly talented individual who exemplifies the role of the pediatric nurse practitioner in every aspect of her professional career. As one student stated, “Patricia not only understands the role of the pediatric nurse practitioner, she has defined it and mastered it.”

# Transformational Leadership



## Awards and Honors

*Considering that each of Meridian's hospitals has achieved Magnet designation, it is not surprising to find that so many Meridian nurses have been recognized for their exceptional accomplishments.*

<b>Ellen Barrington, R.N., MSN</b>	2008 Practice Change Fellow, Colorado University	OMC
<b>Phyllis Begyn, R.N., MSN, OCN, CNA</b>	NJ Governor's Nursing Merit Award Polaris Award, Meridian Health	OMC
<b>Jennifer Bradle, R.N., MSN, APN, CNS</b>	Gail Lawrence Memorial Award, Meridian Health First Place, 2008 Annual Research Day, Jersey Shore	RMC
<b>Sara Jane Campbell, R.N., BSN</b>	Sigma Theta Tau International Honor Society Induction	JSUMC
<b>Donna Ciufu, R.N., FNP, BC</b>	Orion Award, Meridian Health	OMC
<b>Kathy Cooper, R.N.</b>	Orion Award, Meridian Health	OCC HEALTH
<b>Christine Conner, R.N., CCNS, CCRN, FCCS</b>	Elizabeth Kellogg Award, Meridian Health NJ Governor's Award Nominee	OMC
<b>Catherine DeAngelo, R.N., CGRN</b>	Excellence In Professionalism Award, ABCGN Endoscopy	JSUMC
<b>Messalina M. Dy, R.N., MSN, OCN</b>	Elizabeth Kellogg Award, Meridian Health	OMC
<b>Francine Dygulski, RNC</b>	Ackerman Federation Scholarship, Meridian Health	JSUMC
<b>Beverly J. Fey, R.N.</b>	HPAE 2008 Local Award, Outstanding Work and Dedication 15-Year Service Award, Meridian Health Orion Award, Meridian Health Honors & Tribute Award, Joint Legislative Resolution, State of NJ Circle of Life Award, New Jersey Sharing Network	JSUMC
<b>Marie Foley-Danecker, R.N.</b>	Orion Award, Meridian Health	OMC
<b>Regina Foley, R.N., MBA, CHE</b>	Lifetime Leadership Award, Point Pleasant Chamber of Commerce 2008 Distinguished Citizen of the Year, Brick Township Chamber of Commerce	OMC
<b>Eileen Fuorry, R.N., BSN, MA, CNOR</b>	Orion Award, Meridian Health	JSUMC
<b>Anselma S. Gabudao, R.N., CCRN</b>	Nursing Scholarship, The Service Club of Greenbriar, Inc.	OMC
<b>Michele E. Gaguski, R.N., MSN, AOCN, CHPN, APN-C</b>	Advanced Practice Nursing Conference Scholarship, Oncology Nursing Society Foundation Fellow, Oncology Nursing Society Leadership Development Institute	OMC
<b>Joanne Gatto, LPN, N.D., MH, CNC, BS</b>	Employee of the Year, The Arc, Ocean County Chapter	MHR
<b>Rebecca Graboso, R.N., MSN, CCRN, APN</b>	Elizabeth Kellogg Award, Meridian Health NJ Governor's Nursing Merit Award, APN	RMC
<b>Traci Grotto-Ross, R.N., BSN</b>	Mehandru Award, Meridian Health	JSUMC
<b>Linda Hassler, R.N., MS, GCNS-BC</b>	2008 Geriatric Nursing Leadership Academy (Fellow) Sigma Theta Tau International Honor Society	MH
<b>Christine Hedges, R.N., Ph.D., CCNS, ACNS-BC</b>	2008 Geriatric Nursing Leadership Academy (Mentor) Sigma Theta Tau International Honor Society Florence Nightingale Award, Meridian Health 3 <sup>rd</sup> Place, Oral Presentation Award, Jersey Shore Research Day	MH

# *Transformational Leadership*



<b>Bernice Hettesheimer, R.N., CCRN</b>	Excellence in Professionalism Award, ABCGN Endoscopy	JSUMC
<b>Eduardo Iway, R.N., BSN, RN-BC</b>	Florence Nightingale Award, Meridian Health Nursing Quality Scholar, Meridian Health	JSUMC
<b>Sharon S. Jones, R.N., MS, BC, CCRN</b>	Elizabeth Kellogg Award, Meridian Health Elsevier-AACN Excellence in Nursing Award, AACN CCU Team Member of the Month Award, Ocean Medical Center	OMC
<b>Edie Kastner, R.N.</b>	Orion Award, Meridian Health	OMC
<b>Amanda Lillis, RNC</b>	Galaxy Award, Meridian Health	JSUMC
<b>Patti Lucarelli, R.N., MSN, CPNP, APN-C</b>	New Jersey State Nurses Association C.A.R.E. Award for Clinical Practice C.R. Bard Scholarship, Meridian Health	JSUMC
<b>Ramona Maltby, R.N, BSN, CGN</b>	Jean Nappy Award (Outstanding Student), Seton Hall University	OMC
<b>Kathleen A. Martin, R.N., MS, LSW</b>	Phi Kappa Phi Honor Society Induction, Fordham University	OMC
<b>Rosemary McCabe, R.N., MSN, FNP, APN</b>	Galaxy Award, Meridian Health	JSUMC
<b>Cynthia Monahan, R.N.</b>	Polaris Award, Meridian Health	MHR
<b>Marlene Navarro, R.N., MSN, AOCNP, ANP-BC, OCN</b>	Polaris Award, Meridian Health	OMC
<b>James W. Pang, R.N.</b>	Orion Award, Meridian Health	OMC
<b>Jeana Reyes, R.N., BSN, CCRN</b>	Donald J. Keenan Prize for Nursing Excellence, Meridian Health	JSUMC
<b>Erin Reynolds, R.N., BSN, CNOR</b>	American Red Cross Hero Award	OMC
<b>Patricia A. Saklas, R.N., CPN</b>	Florence Nightingale Award, Meridian Health	JSUMC
<b>Mary Jo Sowul, R.N., CNOR</b>	Nurse Excellence Award, Meridian Health	RMC
<b>Heather Starnes, R.N., BC</b>	Sigma Theta Tau International Honor Society Induction Sigma Theta Tau Dean's List, Kean University	JSUMC
<b>Leslie Stewart, R.N., BA, CGRN, ABCGN</b>	Excellence in Professionalism Award, ABCGN Endoscopy	JSUMC
<b>Sherry Timbrook, R.N., RNC</b>	Polaris Award, Meridian Health	JSUMC
<b>Eric K. Wignall, R.N.</b>	Ann May Center for Nursing Scholarship, Meridian Health	JSUMC
<b>Sonja Williams, R.N., BSN</b>	Ann May Alliance Educational Fund Scholarship, Meridian Health Cole Education Grant, Kean University Professional Practice Award, Kean University	JSUMC

# Structural Empowerment



## Nursing School Becomes a Reality

The fall of 2008 ushered in a new era of nursing education at Meridian Health on the beautiful campus of Georgian Court University. Born out of an innovative cooperative partnership, the Georgian Court-Meridian Health School of Nursing received Board of Nursing approval and accepted its first class of 38 nursing students in 2008. This program offers the first and only four-year Bachelor of Science in Nursing in Monmouth and Ocean counties for students without a prior nursing degree, and will accept up to 40 students each academic year. The first cohort of students has been busy taking core and prerequisite courses, and started their first nursing course, "Introduction to the Profession," in January of 2009.

The brand-new curriculum, designed by a team of doctorally prepared nurses and informed by expert nurse educators, practitioners, and researchers, is based on Meridian Health's model of evidence-based care. Students will learn to integrate scientific evidence and clinical expertise with the health care needs and values of patients, families, and the community. The program will prepare graduates to enter the profession as novice practitioners of nursing who will participate in the advancement of the profession and engage in lifelong learning.

Much of the clinical coursework for the school will take place at our own facilities, and students will practice their clinical skills in the high-tech Clinical Simulation Laboratory at Ocean Medical Center. An added benefit of this unique educational partnership will be the opportunity for students to be mentored by Meridian clinical nursing faculty who are current clinicians familiar with the challenges that new graduates face as they transition into practice. The curriculum has been designed to maximize time in the clinical setting, with more hours allocated to clinical experience than most other nursing programs in New Jersey.

Georgian Court-Meridian Health nursing graduates will have full access to the Center for Talent Selection at Meridian to pursue employment after graduation. Recently speaking to the advantages of this partnership, Rich Hader, R.N., Ph.D., senior vice president of Nursing and Chief Nursing Officer stated, "The Georgian Court-Meridian Health School of Nursing will provide the opportunity for men and women to receive a bachelor's degree in nursing without traveling out of the area, and it is our hope that they will stay in the area and provide Meridian Health with a well-educated pool of nursing graduates in years to come."



# Structural Empowerment



## Presentations

*Meridian nurses share research findings and other medical information with audiences throughout the state, the nation, and the world.*

**Jane Bliss-Holtz, DNSc, R.N.–BC**

- MH “The OFFER Program: An Evaluation and Financial Analysis of a ‘Grow Your Own Initiative’ for Recruiting and Supporting Hospital Employees in R.N. Programs,” Second Annual Nursing Economic\$ Nurse Faculty Nurse Executive Summit, Scottsdale, AZ
- “Translating Knowledge into Practice: An Overview,” St. Peter’s University Hospital Fourth Annual Nursing Research Conference, New Brunswick, NJ
- “How to ‘Hit It Out of the Park’ With Evidence-Based Practice,” 4th Annual Jersey Shore Nursing Research and EBP Day
- “The Basics of Evidence-Based Practice,” Riverview Medical Center Annual Research Day
- “Evidence-Based Practice Flash Cards: A Strategy For Achieving ANCC Magnet™ Recognition,” The University of Texas Health Science Center at San Antonio Sixth Summer Institute on Evidence-Based Practice, San Antonio, TX
- “The Iowa Model of Evidence-Based Practice,” St. Peter’s University Hospital, New Brunswick, NJ

**Ellen Barrington, R.N., MSN**

- OMC “Developing an Acute Care of the Elderly Unit in a Community Hospital,” NICHE Conference, Philadelphia, PA
- “The Acute Care of the Elderly Unit at Ocean Medical Center,” Pre-Conference, Pearls of Geriatric Wisdom, Ocean Medical Center
- “Implementing an Acute Care for the Elderly (ACE) Unit in a Community Hospital,” Pearls of Geriatric Wisdom, Ocean Medical Center
- “Alzheimer’s Disease: The Disease with Two Victims,” Mid Atlantic Association and Ocean Medical Center

**Phyllis Begyn, R.N., MSN, OCN, CNA**

- OMC “Nursing Perspectives: An International and Cultural Experience with Our Professional Colleagues in South Africa,” Meridian Health Advanced Practice Nurse Network

**Jennifer Bradle, R.N., MSN, APN, CNS**

- RMC “Advanced Fetal Monitoring,” RPCMOC
- “Intermediate Fetal Monitoring,” RPCMOC
- “Basic Fetal Monitoring,” RPCMOC
- “Neonatal Resuscitation,” RPCMOC

# Structural Empowerment



<b>Kathy Britton, R.N., BSN, MSN, ONC, AANP, AOCNA</b>	JSUMC	“Combining PEP with High Tech: An Innovative Approach to Oncology Nursing Staff Competencies,” poster presentation, Oncology Nursing Society APN Conference, Seattle, WA
<b>Marlena Boeni, R.N., CHPN</b>	MHCS	“Pain Assessment in the Nonverbal Patient,” Meridian Nursing & Rehabilitation at Brick
<b>Jeffrey Booth, R.N., BSN</b>	JSUMC	”COPD: An Evidence-Based Approach,” Nursing Research Symposium
<b>Sara Jane Campbell, R.N., BSN</b>	JSUMC	“Chronic Kidney Disease: Important Facts for Families,” Kean University Research Day
<b>Christine Coyle, R.N., BSN, CCRN</b>	JSUMC	“Easing the Transition from CTICU to the Stepdown Unit,” Quality Scholar Committee
<b>Christine Conner, R.N, CCNS, CCRN, FCCS</b>	OMC	“Updates in Venous Thromboembolism,” Hot Topics in Critical Care: AACN Jersey Shoreline Chapter
<b>Maria Christina P. Corpuz, R.N., BSN, RN-BC</b>	JSUMC	“Ensuring Airway Safety in High Risk Patients,” NTI Poster Presentations, Chicago, IL
<b>Margaret DeBari, R.N., MSN, RN-BC, NE-BC</b>	JSUMC	“A Case Study Analysis of the Impact of Revenue Uncertainty on Hospital and Nursing Operations,” Nursing Management Congress, Las Vegas, NV
<b>Michelle Doebler Morgan, R.N.</b>	JSUMC	“Placement of Urethral Catheter Securement Device to Prevent Urethral Erosion and Catheter Associated Urinary Tract Infections,” Fourth Annual Jersey Shore Nursing Research Day poster presentation
<b>Michele E. Gaguski, R.N., MSN, AOCN, CHPN, APN-C</b>	OMC	“OCN Review Course,” Broward Health, Fort Lauderdale, FL “Communicating Within Your Chapter & Making Your Messages Memorable,” ONS Chapter Columbus, OH “ELNEC Modules 2 (Pain) and 3 (Symptom Management),” Atlanticare Regional Medical Center, Pomona, NJ “OCN Review Course,” St. John’s Hospital and Medical Center, Detroit, MI
<b>Kathleen Gelchion, R.N., MSN, AOCNS, CHPN</b>	RMC	“Combining PEP with High Tech: An Innovative Approach to Oncology Nursing Staff Competencies,” Oncology Nursing Society APN Conference, Seattle, WA
<b>Lisa Guinta, R.N., MSN</b>	JSUMC	“If We Build It, They Will Come,” Nursing Management Congress, Las Vegas, NV “Restraint Use with Demonstration,” Meridian Health Nursing Staff

# Structural Empowerment



<b>Richard Hader, R.N., Ph.D., FAAN, CNE, CPHQ</b>	MH	“Get Published!”, “Place Your Bet on Magnet” and “Workplace Violence,” Nursing Management Congress, Las Vegas, NV “Crime in the Workplace,” Nursing Symposium, Las Vegas, NV, Recruitment and Retention Conference, Boston, MA
<b>Linda Hassler, R.N., MS, GCNS-BC</b>	MH	“The Best Practice Club: An Innovative Approach to Staff Development,” NICHE Convention, NJSNA Convention “An Evidence Based Care Journey: Mental Status Assessment,” Geriatric Best Care Conference
<b>Christine Hedges, R.N., Ph.D., CCNS, ACNS-BC</b>	MH	“Sleep Smart: Understanding Why Patients Don’t Sleep,” and “The 3-Legged Stool: Research, EBP and Performance Improvement,” AACN National Teaching Institute, Concurrent Sessions, Chicago, IL “Comparison of Sleep and Mood in Patients after On-Pump and Off-Pump Coronary Artery Bypass Surgery,” 4th Annual Jersey Shore Nursing Research and EBP Day “RBIs, ERAs, OBPs: Critically Appraising the Evidence,” 4th Annual Jersey Shore Nursing Research and EBP Day
<b>Amanda Hessels, R.N., MSN, MPH, CIC</b>	JSUMC	“Hygiene and Health: Can Baths and Oral Care Reduce Cardiac Surgery Infections,” 4th Annual Meridian Health Cardiovascular Symposium
<b>Bernice Hettesheimer, R.N., CCRN</b>	JSUMC	“Colonoscopy 101,” Jersey Shore University Medical Center
<b>Sharon S. Jones, R.N., MS, BC, CCRN</b>	OMC	“The Oral Care EBP Project,” Ocean Medical Center Nursing Research Education Day
<b>Patti Lucarelli, R.N., MSN, CPNP, APN-C</b>	JSUMC	“Pediatric Physical Assessment,” Regional Perinatal Consortium of Monmouth & Ocean Counties “Frequent Fliers for School Nurses,” Meridian Health Pediatric Seminar Series “Anger in Children,” Annual Health in Child Care Conference, Somerset, NJ “Telephone Red Flags,” Family Health Center, Jersey Shore University Medical Center “Medical Home at the Jersey Shore,” podium and poster presenter, International Nurse Practitioner/International Council of Nurses Conference, Toronto, Canada “Developmentally Appropriate PLAY,” Ocean County Early Learning Council Conference, Stafford, NJ

# Structural Empowerment



		<p>“Anger &amp; Aggression,” Meridian’s Annual Ambulatory Care Conference, Riverview Medical Center</p> <p>“Infant &amp; Toddler Assessment,” Northern Maternal Child Health Consortium Conference, Holy Name Hospital, Teaneck, NJ</p>
<b>Ramona Maltby, R.N., BSN, CGN</b>	OMC	<p>“First, Do No Harm,” Ocean Medical Center</p> <p>“Cascade of Functional Decline,” Kean University</p> <p>“Managing Behaviors,” Gerontology Week Community, Ocean Medical Center, Brick, NJ</p>
<b>Kathleen A. Martin, R.N., MS, LSW</b>	OMC	<p>“Dating Violence,” Brick Township High School, Brick, NJ</p>
<b>Terri McIntosh-Mount, R.N., BSN, RNC, NNC</b>	JSUMC	<p>“Methadone and Pregnancy,” Jersey Shore University Medical Center</p> <p>“Neonatal Abstinence Syndrome,” Jersey Shore University Medical Center</p>
<b>Vibien Myles, RNC</b>	JSUMC	<p>“Insuring Airway Safety in High Risk Patients,” Getting the Word Out! poster presentation, AACN, National Teaching Institute, Chicago, IL</p>
<b>Marlene Navarro, R.N., MSN, AOCNP, ANP-BC, OCN</b>	OMC	<p>“PEP UP Your Practice: Putting Evidence Into Practice,” ONS, Central New Jersey Chapter</p>
<b>Jasmin Osol, R.N., MSN, BC, BSN</b>	OMC	<p>“Coping Styles of Registered Nurses in Various Graduate Nursing Programs,” Monmouth University, West Long Branch, NJ</p>
<b>Diane Resnick, R.N., C, MPA</b>	JSUMC	<p>“Goal Setting and Self Management: An Empowering Process,” 3rd Annual Ambulatory Care Nursing Conference</p> <p>“Nursing Ambulatory Care Scene Investigator: Searching for Clues to Better Outcomes,” 3rd Annual Ambulatory Care Nursing Conference</p>
<b>Erin Reynolds, R.N., BSN, CNOR</b>	OMC	<p>“Understanding Pain Management 101,” Jersey Shore Chapter of AORN</p>

# Structural Empowerment



<b>Richard Ridge, R.N., MBA, Ph.D., CNAA, BC</b>	MH	Keynote Speaker: Nursing Program Pinning Ceremony, Ocean County College, Toms River, NJ Annual Leadership Forum, Alumni Participant, University of Virginia, Charlottesville, VA “Marketing Dollars and Sense: Marketing Concepts & Strategies for the Staff Development Professional,” National Nursing Staff Development Organization Annual Meeting, Minneapolis, MN “Differentiating Quality Improvement from Research,” Lamda Delta chapter, Sigma Theta Tau, Annual Research Day, Monmouth University, West Long Branch, NJ
<b>Joann Sabados-Carolina, R.N., APRN, BC, ADM, CDE</b>	JSUMC	“Nurse Scene Investigator: Assessment Skills versus Red Flags,” 3rd Annual Ambulatory Care Nursing Conference
<b>Judith Slover-Zipf, R.N., APRN, BC, BCADM, CDE</b>	JSUMC	“Overview on Diabetes Mellitus and Its Management: The History of Diabetes and More,” LPN Annual Symposium, Bayshore Community Hospital, Holmdel, NJ
<b>Leslie Stewart, R.N., BA, CGRN, ABCGN</b>	JSUMC	“Endoscopy Competency,” and “Legislation & Nursing Responsibility,” SGNA, Salt Lake City, UT “R.N. Certification Preparation,” SGNA Chicago and Denver “R.N. Practice Direction,” ASGE Chicago and Phoenix
<b>Mary Ellen Strozak, R.N., MS, BC, CCRN</b>	RMC	“It’s A Small World — Bringing National Initiatives to a Small Town Community Hospital,” 2008 NDNQI National Conference, Orlando, FL, and Advanced Practice Network, Jersey Shore University Medical Center
<b>Denise Sullivan, R.N., MSN, BC, CPAN, CNA</b>	RMC	“It’s A Small World — Bringing National Initiatives to a Small Town Community Hospital,” 2008 NDNQI National Conference, Orlando, FL
<b>Alice Trembly, R.N., CCRN, APN-C</b>	JSUMC	“Is It in My Genes? Genetic Diagnosis and You,” NJ Governor’s Conference on Women “Getting to the Heart of Stroke,” Meridian Health 4th Annual Cardiovascular Nursing Symposium

# Structural Empowerment



<b>Sonja Williams, R.N., BSN</b>	JSUMC	“Placement of Urethral Catheter Securement Device to Prevent Urethral Erosion and Catheter Associated Urinary Tract Infections,” poster presentation, 4th Annual Jersey Shore Nursing Research and EBP Day “Ostomy Care: A Contemporary Plan,” 2nd Annual Research Day, Kean University, Union, NJ “Development on Teaching Guide for Ostomies,” PowerPoint presentation, Jersey Shore University Medical Center
<b>Teri Wurmser, R.N., Ph.D., MPH, NEA-BC</b>	MH	“Educating the Educator: Expert On-Ground, Novice Online,” Diversity Workshop, Thomas Edison State College “Pinning Ceremony Address,” Ocean County College Nursing Program Pinning Ceremony, Toms River, NJ “Foreign Recruitment of Registered Nurses: Should We or Shouldn’t We? A Debate,” oral presentation (Moderator), American Organization of Nurse Executives, Seattle, WA “Allied Health Credentialing,” National Association of Medical Staff Services, Atlantic City, NJ
<b>Roselyn Young, R.N., MSN</b>	JSUMC	“AWHONN’s Intermediate Fetal Monitoring Course,” RPCMOC “Perinatal Certification Review Course,” RPCMOC “Maternal-Newborn Certification Review Course,” Meridian Health

## Community Service and Outreach

*Meridian nurses often serve as health care ambassadors and advocates in the communities in which they live and work.*

<b>Amy Addeo, R.N., CAPA</b>	JSUMC	Race for the Cure, Susan G. Komen Relay for Life, American Cancer Society
<b>Ellen Arnold, R.N.</b>	RMC	Monmouth County Health Department Medical Reserve Corps
<b>Michelle Bayer, R.N., BSN</b>	OMC	Heart Walk, American Heart Association Making Strides Against Breast Cancer, American Cancer Society Meridian Volleyball Tournament, American Heart Association
<b>Jinx Bediguian, R.N., BSN, CNOR</b>	JSUMC	K. Hovnanian Children’s Hospital Health Fair Meridian Health Fit and Fabulous Day

# Structural Empowerment



<b>Phyllis Begyn, R.N., MSN, OCN, CNA</b>	OMC	Skin Cancer Screening, American Academy of Dermatology
<b>Susan Bennett, R.N., M.A., NEA, BC</b>	RMC	Avon 2-Day Breast Cancer Walk
<b>Jennifer Bradle, R.N., MSN, APN, CNS</b>	RMC	March of Dimes Walk for Prematurity
<b>Kathy Britton, R.N., BSN, MSN, ONC, AANP, AOCNA</b>	JSUMC	Skin Cancer Screening, Academy of Dermatology Annual Prostate Cancer Screening, Prostate Cancer Education Council Relay for Life, American Cancer Society
<b>Patricia Curtin, R.N., AS, CNOR, ACLS</b>	OMC	Making Strides Against Breast Cancer, American Cancer Society
<b>Donna Ciufo, R.N.</b>	OMC	Career Day Speaker, Brick Township High School Meridian Life Fitness Ride for Heart
<b>Timothy O. Crooks, R.N.</b>	RMC	Volunteer, Liberty USO
<b>Kathy Cooper, R.N.</b>	OCC HEALTH	Monmouth County Health Department Medical Reserve Corps
<b>Christine Conner, R.N., CCNS, CCRN, FCCS</b>	OMC	Making Strides Against Breast Cancer, American Cancer Society Blood Pressure Screening, Church of Epiphany Parish Carnival
<b>Diane Deitz, R.N., MSN, ACNP, CWON, CWS</b>	JSUMC	Ostomy Support Group, Jersey Shore University Medical Center
<b>Messalina M. Dy, R.N., MSN, OCN</b>	OMC	Relay for Life, American Cancer Society Seafood Festival, Point Pleasant, NJ
<b>Veronica Ehlert, R.N., CGRN</b>	OMC	GI Nurse's Day, Ocean Medical Center Community Day, Ocean Medical Center
<b>Cynthia Eustice Scriven, R.N., BSN</b>	RMC	Relay for Life, American Cancer Society Interfaith Hospitality Avon Breast Cancer Walk, American Cancer Society Paint the Town Pink, Riverview Medical Center
<b>Beverly J. Fey, R.N.</b>	JSUMC	Instructor Level One Warner, ICU Competency Day
<b>Kevin S. Fogarty, R.N., CPN</b>	JSUMC	Helmet lectures for children

# Structural Empowerment



<b>Marie Foley-Danecker, R.N.</b>	OMC	Member, Point Pleasant Foundation for Excellence in Education and Triathlon Event volunteer Volunteer, Boardwalk to a Healthier You, Ocean Medical Center Volunteer, Community Education, Infection Prevention & Handwashing, Chalk Garden School Critical Care Community Education Day, Ocean Medical Center
<b>Eileen Fuorry, R.N., BSN, MA, CNOR</b>	JSUMC	Freehold Regional High School Health Fair K. Hovnanian Children's Hospital Health Fair Volunteer, Colts Neck High School PTSO Volunteer St. Mary of the Lake Eucharistic Minister
<b>Lauren Fryer, R.N.</b>	JSUMC	Spring Lake Health Fair
<b>Anselma S. Gabudao, R.N., CCRN</b>	OMC	Rapid Response Team Teaching, Critical Care Week, Ocean Medical Center Research Week, Ocean Medical Center
<b>Michele E. Gaguski, R.N., MSN, AOCN, CHPN, APN-C</b>	OMC	Volunteer, Notes to Neighbors Campaign, American Cancer Society Co-Speaker, "Ask the Oncology Nurse Series," Southern Jersey Shore Chapter of the Oncology Nursing Society Chair and Organizer, Every Breath Counts Walk, Lung Cancer Awareness
<b>Kathleen Gelchion, R.N., MSN, AOCNS, CHPN</b>	RMC	"Ask the Oncology Nurse," Wellness Community Volunteer, Relay for Life, American Cancer Society
<b>Amy Graetz, R.N.</b>	JSUMC	Health Fair, Jersey Shore University Medical Center
<b>Traci Grotto-Ross, R.N., BSN</b>	JSUMC	Health Fair, Meridian Health
<b>Denise Gutwein, R.N., BSN, CCRN</b>	OMC	Greenpeace
<b>Linda Hassler, R.N., MS, GCNS-BC</b>	MH	First Aid Merit Badge Counselor, Boy Scout Troop 140, Middletown, NJ MS Walk
<b>Loren Harrison, R.N., CAPA</b>	JSUMC	Health Fair, Jersey Shore University Medical Center
<b>Joan Harvey, R.N., MSN, CCRN</b>	OMC	Race for the Cure, Susan G. Komen PTA, Russell Obrackman Middle School Membership Chair, St. Mary's Children Liturgy Barnegat Township Education Foundation
<b>Donna Hawley, RNC, BSN</b>	RMC	DAR, Monmouth Shrewsbury Chapter
<b>Christine Hedges, R.N., Ph.D., CCNS, ACNS-BC</b>	MH	Faculty Coordinator, Georgian Court-Meridian Health School of Nursing Winter Coat Drive, New Jersey Cares

# Structural Empowerment



<b>Jule Anne Hueth, R.N., CGRN, BS, PA</b>	OMC	GI Nurse's Day, Ocean Medical Center Community Day, Ocean Medical Center B/P Screening, Allaire State Park B/P Screening, Brick Presbyterian Church Health Ministry
<b>Janice Irvine, R.N., CGRN</b>	JSUMC	Seabrook Assisted Living Health Fair
<b>Sharon S. Jones, R.N., MS, BC, CCRN</b>	OMC	Career Day Speaker, Brick Memorial High School Learning for Life, Ocean Township
<b>Patti Lucarelli, R.N., MSN, CPNP, APN-C</b>	JSUMC	The Arc of New Jersey Prevention Committee Acelero Monmouth County Head Start Health Services Advisory Council Child Care Resources of Monmouth County Regional Perinatal Consortium of Monmouth & Ocean Counties Monmouth-Ocean Lead Consortium JSUMC Pediatric & Adult Asthma Coalition Howell Senior Citizens Salvation, Army Teddy Bear Presentations Parker Family Health Center PNP Volunteer
<b>Ramona Maltby, R.N., BSN, CGN</b>	OMC	Alzheimer's Memory Walk Hospital Elder Life Program, Ocean Medical Center Ocean Medical Center HELP Community Day, Ocean Medical Center
<b>Elisabeth Margl, R.N., BSN, CGRN</b>	OMC	GI Nurse's Day, Ocean Medical Center
<b>Kathleen A. Martin, R.N., MS, LSW</b>	OMC	Parish Nursing, St. Dominic Church, Brick, NJ
<b>Rosemary McCabe, R.N., MSN, FNP, APN</b>	JSUMC	Diabetes Awareness Day, Jersey Shore University Medical Center
<b>Joyce McKeever, R.N., MS, IBCLC</b>	JSUMC	Nursing Awards Committee Member, March of Dimes Nursing Gala
<b>Terri McIntosh-Mount, R.N., RNC, NCC</b>	JSUMC	County Committee Person, Republican Organization Maternal Mortality Review Committee, State of NJ Department of Health
<b>Cynthia Monahan, R.N.</b>	MHR	Heart Walk, American Heart Association
<b>Marlene Navarro, R.N., MSN, AOCNP, ANP-BC, OCN</b>	OMC	Relay for Life, American Cancer Society Skin Cancer Screening, Ocean Medical Center Making Strides Against Breast Cancer, American Cancer Society
<b>Anita Nielson, R.N., CNOR</b>	JSUMC	Boy Scouts of America Merit Badge Counselor

# Structural Empowerment



<b>Loretta Ninivaggi, R.N., MSN, CDE, BC</b>	JSUMC	Diabetes Lecture, Toms River for CCS Medical
<b>Karen Nugent, R.N., CDN</b>	OMC	Volunteer Team Captain, Providence House Domestic Violence Response Team Volunteer Advocate, Sexual Assault Response Team, St. Francis Counseling Center, Long Beach Island, NJ
<b>Heather Ostarticki, R.N., CAPA</b>	JSUMC	Kaleidoscope of Hope Walk, Avon, NJ
<b>Nancy Paglia, R.N.</b>	OMC	Heimlich Maneuver Instruction, 2nd Grade Health Fair
<b>Donna Reed, R.N., BA, CNOR</b>	JSUMC	Crop Walk World Service for World Hunger
<b>Thomas J. Reinhold, R.N., AS</b>	OMC	Career Day, Point Pleasant Memorial Middle School Health Information and B/P Screening, Allaire State Park
<b>Diane Resnick, R.N., C, MPA</b>	JSUMC	Participant, Commission for the Blind Diabetic Eye Screening
<b>Jeana Reyes, R.N., BSN, CCRN</b>	JSUMC	Diabetes Screener, Monmouth Medical Center Blood Pressure Screening, Long Branch Fire House
<b>Erin Reynolds, R.N., BSN, CNOR</b>	OMC	Jingle Ball 5K Race, Toms River Rotary
<b>Richard Ridge, R.N., MBA, Ph.D., CNA, BC</b>	MH	Faculty Participant, Georgian Court-Meridian Health School of Nursing Winter Coat Drive
<b>Elizabeth M. Rotchford, R.N.</b>	JSUMC	New Jersey State Task Force on Adolescent Substance Abuse
<b>Joann Sabados-Carolina, R.N., APRN, BC, ADM, CDE</b>	JSUMC	Project: Helping Hands, Food Pantry National Delegate, Girl Scouts Camp Letico Eye Screenings for Diabetes Patients
<b>Vera Sansolo, R.N., CPN</b>	OMC	Teddy Bear Clinic, Jersey Shore Mother's Group
<b>Janice Scribellito, RNC, MSN</b>	OMC	Community Day, Ocean Medical Center
<b>Judith Slover-Zipf, R.N., APRN, BC, BCADM, CDE</b>	JSUMC	Team Captain, JDRF Walk Volunteer Nurse Practitioner, Parker Clinic, Red Bank, NJ
<b>Barbara St. John, R.N., CRRN</b>	SRI	SRI Community Day Breast Cancer Walk, American Cancer Society
<b>Leslie Stewart, R.N., BA, CGRN, ABCGN</b>	JSUMC	March CRC Screening Education Health Fair, Neptune Township "Barrx" Wall Senior Health Fair
<b>Mary Ellen Strozak, R.N., MS, BC, CCRN</b>	RMC	Health Care Ministry, St. Benedicts Parish Medical Coordinator of Genneserat Retreat
<b>Denise Sullivan, R.N., MSN, BC, CPAN, CNA</b>	RMC	Genneserat Retreat

# Structural Empowerment



<b>Jill Tralka, R.N., BSN, CPN, ENPC, CA</b>	JSUMC	Neptune Township Employee Health Fair Helmet Safety, K. Hovnanian Children's Hospital CCD Educator for Children with Special Needs, Holy Trinity Society Belmar Health Fair Walker/ Volunteer, Make-a-Wish Foundation of New Jersey Race for the Cure, Susan G. Komen 3-Day Medical Crew Volunteer, Susan G. Komen, San Diego, CA Member, Community Emergency Response Team
<b>Lynne Tomlinson, R.N., MSN, BC, ONC, CCM</b>	OMC	Nursing Career Program, Girl Scouts of America Career Day, Brick Township High School Community Day, Ocean Medical Center Volunteer, Dottie's House Meditation and Relaxation Sessions, MOMS Co-Leader, Ostomy Support Group Heart Walk, American Heart Association
<b>Michael J. Warren, R.N., AD, CCRN, TNCC</b>	JSUMC	Volunteer, Providence House Feed the Homeless, Shore Vineyard Church, Beachwood, NJ
<b>Eric K. Wignall, R.N.</b>	JSUMC	Instructor, Basic Life Support Participant, Career Day, Asbury Park High School
<b>Roselyn Young, R.N., MSN</b>	JSUMC	March of Dimes Walk for Prematurity Prevention, Belmar, NJ

## International Service

<b>Kathryn Clancy, R.N., BSN, CNOR, ACLS</b>	OMC	Mission to Hopital Sacre-Coeur, Milot, Haiti
<b>Timothy O. Crooks, R.N.</b>	RMC	Captain, United States Army Reserve Instructor/Evaluator for Global Medic
<b>Regina Foley, R.N., MBA, CHE</b>	OMC	Mission to Hopital Sacre-Coeur, Milot, Haiti
<b>Christine Hedges, R.N., Ph.D., CCNS, ACNS-BC</b>	MH	Northeast Medical Mission, Davoa Oriental, Philippines
<b>Eileen Oates R.N., APNC, CEN</b>	JSUMC	Medical/Surgical Services, Guatemala
<b>Pamela Rossano, R.N., CBE</b>	RMC	Volunteer Medical Reserve Corps
<b>Denise Sullivan, R.N., MSN, BC, CPAN, CN A</b>	RMC	Volunteer Medical Reserve Corps, Guatemala
<b>Teri Wurmser, R.N., Ph.D., MPH, NEA-BC</b>	MH	Coordinator, Northeast Medical Mission, Davao Oriental, Philippines

# Structural Empowerment



## Educational Achievements

*Maintaining a work/life balance is a challenge for nurses working in today's health care environment. Yet many Meridian nurses continue to pursue undergraduate and graduate degrees in order to advance their clinical skills.*

### Associate in Science (AS)

Lynn-Holly Benzon, R.N., AS JSUMC Brookdale Community College

### Bachelor of Science (BS)

Joanne Gatto, LPN, N.D., MH, CNC, BS MHR Clayton College  
Trinity College (Naturopathic Doctor)

### Bachelor of Science in Nursing (BSN)

Nicole Adams, R.N., BSN	JSUMC	Seton Hall Accelerated Program
Robin Baumann, R.N., BSN, CCRN	JSUMC	Rutgers University
Sara Jane Campbell, R.N., BSN	JSUMC	Kean University
Doreen Clark, R.N., BSN, CCRN	RMC	Monmouth University
Grace Corliss, R.N., BSN	JSUMC	Seton Hall Accelerated Program
Deborah A. DiRosa, R.N., BSN, CCRN, CMC	OMC	Seton Hall University
Cynthia Eustice Scriven, R.N., BSN	RMC	Thomas Edison State College
Sheryl Gabriel, R.N., BSN	JSUMC	Seton Hall Accelerated Program
Denise Gutwein, R.N., BSN, CCRN	OMC	Kean University
Jill Izzo, R.N., BSN	JSUMC	Seton Hall Accelerated Program
Mary Luhn, R.N., BSN, CRRN	OMC	Kean University
Eileen Maclearie, R.N., BSN	JSUMC	Thomas Edison State College
Mondestin Napoleon, R.N., BSN	JSUMC	Seton Hall Accelerated Program
Janice Scribellito, RNC, MSN	OMC	University of Delaware
Sonja Williams, R.N., BSN	JSUMC	Kean University

### Master of Science in Nursing (MSN)

Phyllis Begyn, R.N., MSN, OCN, CNA	OMC	Monmouth University
Marie C. Chisvette, R.N., MSN	JSUMC	Wagner College
Kathleen Gelchion, R.N., MSN, AOCNS, CHPN	RMC	Monmouth University
Lisa Guinta, R.N., MSN	JSUMC	Walden University
Katherine Hoos, R.N., MSN, CNA	OMC	Monmouth University
Jasmin Osol, R.N., MSN, BC	OMC	Monmouth University
Joni Prentice, R.N., MSN, CCRN	JSUMC	Monmouth University
Lynne Tomlinson, R.N., MSN, BC, ONC, CCM	OMC	Metropolitan State University
Patricia Worth, R.N., MSN	MQC	Rutgers University

### OFFER Program Graduates

Kimberly Alcott, R.N.	RMC	Brookdale Community College
Christine Bloodgood, R.N.	RMC	Charles E. Gregory School of Nursing
Taran Chatman, R.N.	OMC	Ocean County College
Joseph Church, R.N.	RMC	Brookdale Community College
Christina Curcio, R.N.	JSUMC	Brookdale Community College
Vicky Long, R.N.	JSUMC	Brookdale Community College
Tracey Martin, R.N.	JSUMC	Brookdale Community College
Dawn Mizrachi, R.N.	OMC	Brookdale Community College
Marie Mupada, R.N.	JSUMC	Charles E. Gregory School of Nursing

# Exemplary Professional Practice



## New Opportunities for Advancement Through the Clinical Advancement and Recognition of Excellence (C.A.R.E.) Program

2008 was a year of exciting change for the C.A.R.E. program with the introduction of a new Scholar option. Clinical Advancement and Recognition of Excellence (C.A.R.E.) has successfully recognized the career advancement of Meridian Health nurses since 2003. With close to 60% of all Meridian nurses on the C.A.R.E. program, we are extremely proud of our nurses' level of professional engagement and accomplishment. However, with a goal of 100% eligible nurses to be on C.A.R.E., Meridian launched new, creative initiatives to further enhance the program. Two "specialty" Scholar programs were added in 2008, the Geriatric Clinical Scholar and the Nursing Quality Scholar.

These specialty Scholar tracks are unique, in that nurses seeking this role can advance directly to the Scholar level without going through the traditional Fellow and Resource level first, provided they meet the requirements. In addition, no C.A.R.E. portfolio is required, but rather, nurses submit an application explaining why they seek Geriatric or Quality Scholar status. One of the key differences in the specialty Scholar tracks is that the nurse begins to live the Scholar role immediately through guided education and support, is reimbursed as a Scholar within the first three months, and works on a project with a strong focus on outcomes concurrent to Scholar designation. This is a major shift from a traditional retrospective portfolio review of a nurse's previous, completed work in order to advance in C.A.R.E.

The new specialty Scholar tracks have proven successful so far. The Geriatric Clinical Scholar acts as a role model for other staff by championing geriatric best care practices and protocols while assisting colleagues and other health care workers with geriatric competencies, with an emphasis on improving care and outcomes for the older adult in our health care system.

The Nursing Quality Scholar possesses a positive attitude with a demonstrated interest in quality improvement. The Nursing Quality Scholar acts as a role model for other staff by championing nursing quality improvement initiatives, leading Plan/Do/Check/Act (PDCA) quality teams, and being a conduit of information on quality care processes and information.

As interest in specialty Scholar tracks grows, Meridian is considering the addition of new roles. There are already plans for a Clinical Research Scholar and an Evidence-Based Practice Scholar track for 2009. With a focus on nursing career advancement and positive, measurable patient outcomes, the C.A.R.E. program's new addition is raising the bar in nursing practice at Meridian Health.

## Clinical Advancement and Recognition of Excellence

*The C.A.R.E. program acknowledges and rewards nurses who have demonstrated a level of clinical expertise and practice that improves patient outcomes.*

<b>Karen Afonso, R.N.</b>	Fellow	JSUMC	<b>Linda M. Cordi, R.N., RNC</b>	Fellow	RMC
<b>Marites Aguilar, R.N., BSN</b>	Fellow	JSUMC	<b>Karen Dalton, R.N., MSRN</b>	Fellow	RMC
<b>Elizabeth Akinlolu, R.N.</b>	Fellow	JSUMC	<b>Abraham de Leon, R.N., BSN</b>	Fellow	RMC
<b>Rovella Alviola, R.N., BSN</b>	Fellow	JSUMC	<b>Corazon de Leon, R.N., BSN</b>	Fellow	RMC
<b>Ashley Ascough, R.N.</b>	Fellow	JSUMC	<b>Jeanette C. Del Rosario, R.N., MSN</b>	Fellow	RMC
<b>Stella Atamian, R.N., BSN</b>	Fellow	RMC	<b>Robert H. Del Rosario, R.N., BSN</b>	Fellow	RMC
<b>Lindsay Baumann, R.N., BSN</b>	Fellow	JSUMC	<b>Yvonne Desbordes, R.N.</b>	Fellow	RMC
<b>Jacki Bernick, R.N., BSN, RNC</b>	Fellow	JSUMC	<b>Arcadio DeVera, R.N., BSN</b>	Fellow	OMC
<b>Jenna E. Blackburn, R.N., BSN, NRP</b>	Fellow	JSUMC	<b>Ana Dias, R.N., ONC</b>	Fellow	RMC
<b>Sharon Brown, R.N., CNOR</b>	Fellow	JSUMC	<b>Jennifer Digregoria, R.N., BSN</b>	Fellow	RMC
<b>Fallon A. Brown, R.N.</b>	Fellow	JSUMC	<b>Donavan Dy, R.N., BSN</b>	Fellow	JSUMC
<b>Katie Cabrera, R.N., BSN, ONC</b>	Fellow	RMC	<b>Karen Edwards, R.N.</b>	Fellow	RMC
<b>Vicma Marie Cac, R.N.</b>	Fellow	JSUMC	<b>Mary Pat Fastiggi, R.N., BSN</b>	Fellow	RMC
<b>Jacquelyn Camidge, R.N.</b>	Fellow	JSUMC	<b>Debra Favire, R.N., OCN</b>	Fellow	OMC
<b>Laurie Canny, R.N., BSN, CPAN</b>	Fellow	RMC	<b>Therese Filachek, R.N., BSN</b>	Fellow	OMC
<b>Aniceto Carumba, Jr., R.N.</b>	Fellow	RMC	<b>Bridget K. Finnegan, R.N., BSN</b>	Fellow	JSUMC
<b>Almarie D. Castro, R.N., BSN</b>	Fellow	JSUMC	<b>Marie Rose Floresca, R.N., BSN</b>	Fellow	JSUMC
<b>Jennifer N. Chiarello, R.N., BSN</b>	Fellow	JSUMC	<b>Maria Galgon, R.N.</b>	Fellow	OMC
<b>Joanna Concepcion, R.N.</b>	Fellow	JSUMC	<b>Sheila Glover, R.N.</b>	Fellow	OMC

# Exemplary Professional Practice



<b>Monica Ann Grad, R.N.</b>	Fellow	JSUMC	<b>Holly Brown, R.N., RNC</b>	Resource	JSUMC
<b>Jose A. Guerrero, R.N.</b>	Fellow	RMC	<b>Winston Brown, R.N.</b>	Resource	JSUMC
<b>Lauren Hanson, R.N., BSN</b>	Fellow	JSUMC	<b>Mae Burrell, R.N.</b>	Resource	JSUMC
<b>Joy Sheryl Hibionada, R.N., BSN</b>	Fellow	RMC	<b>Milagros Roela C. Cadacio, R.N., BSN, CCRN</b>	Resource	JSUMC
<b>Michael Paul Hibionada, R.N., BSN</b>	Fellow	RMC	<b>Tamara Cafaro, R.N., BSN, RNC</b>	Resource	RMC
<b>Kathryn J. Hoey, R.N., BSN</b>	Fellow	JSUMC	<b>Patricia Devine, R.N., BSN</b>	Resource	JSUMC
<b>Rachel Hollywood, R.N.</b>	Fellow	OMC	<b>Francine Dygulski, R.N., RNC</b>	Resource	JSUMC
<b>Doreen Ippoliti, R.N.</b>	Fellow	JSUMC	<b>Carol Grace L. Fainsan, R.N., BSN</b>	Resource	JSUMC
<b>Janice Irvine, R.N., CGRN</b>	Fellow	JSUMC	<b>Toni D. Gale, R.N.</b>	Resource	OMC
<b>Michelle Jorgensen-Vasquez, R.N., BS</b>	Fellow	JSUMC	<b>Julie Greimel, R.N., BA, CVT, RNC</b>	Resource	JSUMC
<b>Diane S. LaBarbera, R.N., RNC</b>	Fellow	RMC	<b>Cora Gutierrez, R.N., BSN, RNC</b>	Resource	JSUMC
<b>Nicole Lake, R.N.</b>	Fellow	RMC	<b>Noreen M. Habegger-Leach, R.N., BSN</b>	Resource	JSUMC
<b>Siobhan Lonergan, R.N.</b>	Fellow	RMC	<b>Kathy Hahn, R.N., BSN, RNC</b>	Resource	OMC
<b>Lisa McAlonie, R.N.</b>	Fellow	JSUMC	<b>Janice P. Humiding, R.N., BSN</b>	Resource	JSUMC
<b>Christine McHugh, R.N., CGRN</b>	Fellow	RMC	<b>Aileen T. Kaamino, R.N., BSN</b>	Resource	OMC
<b>Tracy McIntyre, R.N., BSN</b>	Fellow	JSUMC	<b>Annmarie Kennedy, R.N., RNC</b>	Resource	OMC
<b>Nenita Medina, R.N., BSN</b>	Fellow	RMC	<b>Karen Kennedy, R.N., RNC</b>	Resource	OMC
<b>Amy Miller, R.N.</b>	Fellow	OMC	<b>Lucille King, R.N., BSN, CCRN, CGRN</b>	Resource	RMC
<b>Danielle A. Moran, R.N., BSN</b>	Fellow	JSUMC	<b>Nirmal Kumar, R.N., CEN</b>	Resource	RMC
<b>Marva Morris, R.N.</b>	Fellow	OMC	<b>Frances Lay, R.N., RNBC</b>	Resource	RMC
<b>Linda Kay Neely, R.N.</b>	Fellow	JSUMC	<b>Carolyn McGovern, R.N., CEN</b>	Resource	JSUMC
<b>Estrella Padama, R.N.</b>	Fellow	RMC	<b>Sandra Mead, R.N., MSN, RNC, APN</b>	Resource	JSUMC
<b>Allison L. Pianoforte, R.N., BSN</b>	Fellow	JSUMC	<b>Anita Menture, R.N.</b>	Resource	RMC
<b>Zulmira Pinto, R.N., BSN, COHN</b>	Fellow	JSUMC	<b>Adleen O'Kere, R.N., BSN, RNC</b>	Resource	JSUMC
<b>Denise Pischel, R.N., BSN</b>	Fellow	JSUMC	<b>Nkechi Osefoh, R.N., BS</b>	Resource	RMC
<b>Virginia Proscia, R.N., BA</b>	Fellow	JSUMC	<b>Nancy Park, R.N., RNC</b>	Resource	RMC
<b>Lori Rawson, R.N.</b>	Fellow	JSUMC	<b>Maria Rocel P. Ramos, R.N., BSN</b>	Resource	JSUMC
<b>Herme H. Requiron, R.N., BSN</b>	Fellow	JSUMC	<b>Maria L. Reyes, R.N. BSN</b>	Resource	RMC
<b>Alejandro Reyes, R.N., BSN, RNC</b>	Fellow	JSUMC	<b>Analyn B. Santiago, R.N., RNBC</b>	Resource	JSUMC
<b>Agnes Reyes, R.N., BSN</b>	Fellow	RMC	<b>Ann T. Santifort, R.N., RNC</b>	Resource	RMC
<b>Kathleen A. Rivers, R.N., SGNA</b>	Fellow	RMC	<b>Denise Selleck, R.N., BSN</b>	Resource	RMC
<b>Rose Rumore, R.N.</b>	Fellow	RMC	<b>Kathleen S. Spillane, R.N., RNC</b>	Resource	JSUMC
<b>Jo Scala, R.N., BSN</b>	Fellow	OMC	<b>Heather Starnes, R.N., BC</b>	Resource	JSUMC
<b>Michelle Schwartz, R.N.</b>	Fellow	JSUMC	<b>Caroline E. Strich, R.N.</b>	Resource	JSUMC
<b>Lisabeth Stratton, R.N., BSN</b>	Fellow	RMC	<b>Krista Suoninen, R.N.</b>	Resource	OMC
<b>Carisa Sulkowski, R.N., BSN</b>	Fellow	JSUMC	<b>Judith Sweeney, R.N.</b>	Resource	OMC
<b>Maria G. Torres, R.N., BS</b>	Fellow	JSUMC	<b>Corinne A. Tortorici, R.N., BSN</b>	Resource	JSUMC
<b>Melanie Turaniczo, R.N., OCN</b>	Fellow	JSUMC	<b>Tracy Tremer, R.N., BSN, CGRN</b>	Resource	RMC
<b>Lisa Rose Uhl, R.N.</b>	Fellow	JSUMC	<b>Melanie Woodward, R.N.</b>	Resource	JSUMC
<b>Lauren Worst, R.N., BSN</b>	Fellow	JSUMC	<b>Stephanie Zabilowicz, R.N., BSN</b>	Resource	JSUMC
<b>Kimberly Worth, R.N.</b>	Fellow	JSUMC	<b>Marie Marthe Areus, R.N., RNC</b>	Scholar	JSUMC
<b>Myrna Abetria-Ramas, R.N., BSN</b>	Resource	RMC	<b>Robin Baumann, R.N., CCRN</b>	Scholar	JSUMC
<b>Maria Socore Aguilar, R.N., BSN</b>	Resource	JSUMC	<b>Lisa Bellingham-Meehan, R.N., BSN</b>	Scholar	OMC
<b>Ma Edna C. Agura, R.N., BSN, RNC</b>	Resource	RMC	<b>Mary Brandsema, R.N., OCN</b>	Scholar	OMC
<b>Sharon C. Agustin, R.N., BSN, RNC</b>	Resource	JSUMC	<b>Jeanne Carotenuto, R.N.</b>	Scholar	RMC
<b>Joanah Amparo, R.N.</b>	Resource	JSUMC	<b>Elizabeth Ciccone, R.N.</b>	Scholar	RMC
<b>Bryanne A. Apilado, R.N., RNC</b>	Resource	JSUMC	<b>Janet Conwell, R.N., RNC</b>	Scholar	RMC
<b>Christina Barrett, R.N., BSN, RNC</b>	Resource	JSUMC	<b>Pamela Cooper, R.N., BS, OCN</b>	Scholar	JSUMC
<b>Marie Paz Basinang, R.N., BSN</b>	Resource	JSUMC	<b>Elizabeth Dante, R.N., RNC</b>	Scholar	JSUMC
<b>Monica Bergrud, R.N., BSN</b>	Resource	JSUMC	<b>Rosemarie De Almeida Gajda, R.N., BSN, CEN</b>	Scholar	OMC
<b>Bernardo Besa, R.N., BSN</b>	Resource	RMC	<b>Laarni P. DeGala, R.N., BSN, CCRN</b>	Scholar	RMC

# Exemplary Professional Practice



<b>Michelle Doebler-Morgan, R.N.</b>	Scholar	JSUMC	<b>Michele O'Connor, R.N.</b>	Scholar-Geriatric	OMC
<b>Conrad Ehrig, R.N., BSN, RNC</b>	Scholar	JSUMC	<b>Lyn S. Ompod, R.N., BSN</b>	Scholar-Geriatric	OMC
<b>Pasqualina English, R.N., CRN</b>	Scholar	JSUMC	<b>Nicole M. Ortiz, R.N.</b>	Scholar-Geriatric	OMC
<b>Christina L. Evans, R.N., OCN</b>	Scholar	JSUMC	<b>Esmeralda Sanchez, R.N., BSN, RNC</b>	Scholar-Geriatric	OMC
<b>Beverly J. Fey, R.N.</b>	Scholar	SUMC	<b>Roxanna Santiago, R.N.</b>	Scholar-Geriatric	JSUMC
<b>Patricia Gashlin, R.N., RNC</b>	Scholar	OMC	<b>Denise Schwartz, R.N.</b>	Scholar-Geriatric	OMC
<b>Robin Grant, R.N.</b>	Scholar	JSUMC	<b>Denise Stapleton, R.N., BSN, RNC</b>	Scholar-Geriatric	OMC
<b>John R. Hill, R.N., RNC</b>	Scholar	JSUMC	<b>Josephine R. Vega, R.N., BSN</b>	Scholar-Geriatric	OMC
<b>Theresa Klenk, R.N.</b>	Scholar	JSUMC	<b>Donna M. Wicoff, R.N., RNC</b>	Scholar-Geriatric	OMC
<b>Eunsun Koo, R.N.</b>	Scholar	JSUMC	<b>Patricia Zweemer, R.N.</b>	Scholar-Geriatric	OMC
<b>Catherine Lauro, R.N.</b>	Scholar	RMC	<b>Paris Bottazzi, R.N., BSN</b>	Scholar-Quality	JSUMC
<b>Donna Lembo, R.N., BSN, CEN</b>	Scholar	OMC	<b>Karen A. Cadigan, R.N.</b>	Scholar-Quality	JSUMC
<b>Jennifer Lindquist, R.N., BS</b>	Scholar	JSUMC	<b>Christine Coyle, R.N., BSN, RNC</b>	Scholar-Quality	JSUMC
<b>Kathleen Luthe, R.N., BS, CCRN</b>	Scholar	JSUMC	<b>Kathleen Curto, R.N.</b>	Scholar-Quality	JSUMC
<b>Jill Mosteller, R.N., MSN, CCRN</b>	Scholar	OMC	<b>Kristine DeGaetano, R.N., BSN</b>	Scholar-Quality	JSUMC
<b>Carol A. Nickel, R.N., BSN</b>	Scholar	JSUMC	<b>Susan Dice, R.N., CPAN</b>	Scholar-Quality	OMC
<b>Diane Nicolosi, R.N., BSN</b>	Scholar	RMC	<b>Brenna Gaughan, R.N.</b>	Scholar-Quality	OMC
<b>Jasmin Osol, R.N., MSN, RNC</b>	Scholar	OMC	<b>Darlene Gillmore, R.N., ONC</b>	Scholar-Quality	JSUMC
<b>Elizabeth M. Rotchford, R.N., MA, RNBC</b>	Scholar	JSUMC	<b>Barbara Hammond, R.N.</b>	Scholar-Quality	JSUMC
<b>Kristy L. Savaronola-Robinson, R.N., BSN, RNC</b>	Scholar	JSUMC	<b>Sharon Herlan, R.N.</b>	Scholar-Quality	JSUMC
<b>Rhonda Thomas, R.N., BSN, ONC</b>	Scholar	RMC	<b>Eduardo Y. Iway, Jr., R.N., BSN</b>	Scholar-Quality	JSUMC
<b>Siobhan Vuono, R.N., RNC</b>	Scholar	JSUMC	<b>Nancy Kent-Roche, R.N.</b>	Scholar-Quality	JSUMC
<b>Sonja Williams, R.N., RNC</b>	Scholar	JSUMC	<b>Amy Konow, R.N.</b>	Scholar-Quality	JSUMC
<b>Lillian Carr, R.N.</b>	Scholar-Geriatric	RMC	<b>Maria Manzella Brown, R.N., BSN</b>	Scholar-Quality	JSUMC
<b>Judith Finkel, R.N., GRN</b>	Scholar-Geriatric	RMC	<b>Tracy Nerney, R.N., BSN</b>	Scholar-Quality	JSUMC
<b>Rhodora Credo Barretto, R.N., BSN</b>	Scholar-Geriatric	OMC	<b>Joan Palermo, R.N.</b>	Scholar-Quality	JSUMC
<b>Giovanna Beaudry, R.N.</b>	Scholar-Geriatric	OMC	<b>Barbara Paratore, R.N.</b>	Scholar-Quality	JSUMC
<b>Jocelyn Benauro, R.N., BSN, RNC</b>	Scholar-Geriatric	OMC	<b>Leslie Parra, R.N., BSN, RNC</b>	Scholar-Quality	JSUMC
<b>Susan Bitten, R.N.</b>	Scholar-Geriatric	OMC	<b>Kristen Pense, R.N.</b>	Scholar-Quality	RMC
<b>Barbara Boyler, R.N., RNC</b>	Scholar-Geriatric	JSUMC	<b>Kristen Perri, R.N.</b>	Scholar-Quality	OMC
<b>Andrea Crate, R.N.</b>	Scholar-Geriatric	OMC	<b>Orlene E. Reid, R.N.</b>	Scholar-Quality	JSUMC
<b>Arnold N. DeLuna, R.N., BSN</b>	Scholar-Geriatric	OMC	<b>Lori Rice, R.N.</b>	Scholar-Quality	OMC
<b>Susan Dolak, R.N., CPAN</b>	Scholar-Geriatric	OMC	<b>Marilyn R. Roy, R.N., BSN</b>	Scholar-Quality	JSUMC
<b>Elizabeth A. Dowd, R.N., RNC</b>	Scholar-Geriatric	OMC	<b>Clarice Schwartz, R.N., BSN</b>	Scholar-Quality	JSUMC
<b>Traci Glasgow, R.N., CPAN</b>	Scholar-Geriatric	OMC	<b>Connie Sim, R.N., BSN</b>	Scholar-Quality	JSUMC
<b>Luis A. Ingles, R.N.</b>	Scholar-Geriatric	OMC	<b>Lisa Soberg, R.N.</b>	Scholar-Quality	JSUMC
<b>Edie Kastner, R.N.</b>	Scholar-Geriatric	OMC	<b>Patrick Tabora, R.N., BSN</b>	Scholar-Quality	RMC
<b>Sharon Lubeck, R.N.</b>	Scholar-Geriatric	OMC	<b>Quyten Tran, R.N.</b>	Scholar-Quality	JSUMC
<b>Suzanne Mitele, R.N., BSN</b>	Scholar-Geriatric	JSUMC	<b>Shameca Trotman, R.N.</b>	Scholar-Quality	OMC
<b>Caroline M. Nobleza, R.N., BSN, RNBC</b>	Scholar-Geriatric	OMC	<b>Danielle Whitley, R.N.</b>	Scholar-Quality	OMC
<b>Connie Nusbaum, R.N.</b>	Scholar-Geriatric	OMC			

## Certifications

*The enduring desire to advance one's clinical skills and to achieve new knowledge is a powerful motivation for Meridian nurses.*

Adult Clinical Nurse Specialist (CNS)	<b>Anne Carter, R.N., CNS</b>	RMC
Adult Nurse Practitioner (ANP)	<b>Marlene Navarro, R.N., MSN, AOCNP, ANP-BC, OCN</b> <i>recertification</i> <b>Judith Slover-Zipf, R.N., APRN, BC, BC-ADM, CDE, AANP</b> <i>recertification</i>	OMC JSUMC

# Exemplary Professional Practice



Advanced Holistic Nursing Board Certification	<b>Eileen Oates, R.N., APNC, CEN, AHN, BC</b>	JSUMC
Advanced Practice Nurse Certification (APNC)	<b>Laura Sofield, R.N., APNC, CEN</b>	<i>recertification</i> MH
American Board Certified Gastroenterology Registered Nurse	<b>Catherine DeAngelo, R.N., ABCGRN</b>	JSUMC
American Board Gastroenterology Nurse Certification	<b>Leslie Stewart, R.N., BA, CGRN, ABCGN</b>	JSUMC
Cardiac Medicine Certified	<b>Jeana Reyes, R.N., C, BSN, CCRN</b>	JSUMC
Cardiac Surgery Certification (CSC)	<b>Kristin A. DiSandro, R.N, CSC</b>	JSUMC
Cardiac Vascular Nurse Certification (CVN)	<b>Heather Starnes, R.N., C, BSN, BC, CVN</b> <b>Dawn Mans, R.N., AS, CVN</b> <b>Rocel Besa, R.N., Ph.D, BC, CVN</b>	JSUMC JSUMC RMC
Certified Case Manager (CCM)	<b>Donna Kelsey Quigley, R.N., CCM</b> <b>Patricia Smith, R.N., CCM</b>	OMC OMC
Certified Emergency Nurse (CEN)	<b>Kathleen Brophy-Degrassie, R.N., ACLS, PALS, ENPC, TNCC, CEN</b> <b>Tatyana Kozhevnikova, R.N., CEN</b> <b>Eileen Oates R.N., APNC, CEN</b>	OMC <i>recertification</i> OMC JSUMC
Certified Hospice and Palliative Care Nurse (CHPN)	<b>Marlena Boeni, R.N., CHPN</b> <b>Kathleen Gelchion, R.N., MSN, AOCNS, CHPN</b>	MHCS RMC
Certified Hospice and Palliative Licensed Nurse (CHPLN)	<b>Stephanie Sims, LPN, CHPLN</b>	MHCS
Certified Legal Nurse Consultant (LNC)	<b>Diane Resnick, R.N., C, MPA, LNC</b>	JSUMC
Certified Medical Interpreter (CMI)	<b>Judith Conceicao, LPN, CMI</b>	JSUMC
Certified Nurse Operating Room (CNOR)	<b>Jinx Bediguian, R.N., BSN, CNOR</b> <b>Denise Buchanan, R.N., CNOR</b> <b>Patricia Curtin, R.N., AS, CNOR</b> <b>Erin Reynolds, R.N., BSN, CNOR</b>	<i>recertification</i> JSUMC JSUMC <i>recertification</i> OMC <i>recertification</i> OMC
Certified Pediatric Nurse (CPN)	<b>Karen Brodeur, R.N., CPN</b> <b>Cynthia Feinen, R.N., MSN, CPN</b> <b>Kevin S. Fogarty, R.N., CPN</b> <b>Beryl Lyford, R.N., CPN</b> <b>Sara Mummolo, R.N., AS, CPN</b> <b>Patricia A. Saklas, R.N., CPN</b> <b>Vera Sansolo, R.N., CPN</b>	JSUMC JSUMC JSUMC JSUMC JSUMC JSUMC OMC
Gastroenterology Nurse Certification (CGRN)	<b>Janice Irvine, R.N., CGRN</b> <b>Elisabeth Margl, R.N., BSN, CGRN</b>	JSUMC OMC

# Exemplary Professional Practice



Gerontology Certification (CGN)	<b>Andrea Crate, R.N., BC, CGN</b>	OMC
	<b>Pamela M. Holmgren, LPN, CGN</b>	JSUMC
	<b>Ramona Maltby, R.N., BSN, CGN</b>	OMC
	<b>Caroline Nobleza, R.N., BC, BSN, CGN</b>	OMC
	<b>Nicole Ortiz, R.N., CGN</b>	OMC
	<b>Roxanna Santiago, R.N., BC, CGN</b>	JSUMC
	<b>Denise Schwartz, R.N., CGN</b>	OMC
	<b>Alda C. Valenzuela, R.N., BSN, CGN</b>	MQC
	<b>Donna M. Wicoff, R.N., C, CGN</b>	OMC
Certified Personal Trainer	<b>Kim Bunting, R.N.</b>	JSUMC
Certified Radiology Nurse (CRN)	<b>Deborah Rupp, R.N., BSN, CRN</b>	JSUMC
Certified Registered Rehabilitation Nurse (CRRN)	<b>Mary Heilbroun, R.N., CCRN, CRRN</b>	OMC
	<b>Marybeth Lewis, R.N., CRRN</b>	OMC
	<b>Mary Luhn, R.N., BSN, CRRN</b>	OMC
	<b>Barbara St. John, R.N., CRRN</b>	SRI
	<b>Margaret Zimmerman, R.N., CRRN</b>	SRI
Certified Wound, Ostomy and Continence Nurse	<b>Mariama Hubbard, R.N., MA, MSN, FNP, CNS, BC</b>	JSUMC
Child Birth Education Specialist	<b>Pamela Rossano, R.N., CBE</b>	RMC
Critical Care Certification (CCRN)	<b>Robin Baumann, R.N., BSN, CCRN</b>	JSUMC
	<b>Christine Conner, R.N., CCNS, CCRN, FCCS</b>	<i>recertification</i> OMC
	<b>Anselma S. Gabudao, R.N., CCRN</b>	OMC
	<b>Richard V. Penalosa, Jr., R.N., BC, CCRN</b>	JSUMC
	<b>Joni Prentice, R.N., MSN, CCRN</b>	JSUMC
	<b>Brian Salle, R.N., CCRN</b>	JSUMC
	<b>Michael J. Warren, R.N., AD, CCRN, TNCC</b>	JSUMC
Electronic Fetal Monitoring	<b>Elizabeth Isaac, R.N., C</b>	JSUMC
Emergency Nursing Pediatric Care (ENPC)	<b>Jill Tralka, R.N., C, BSN, CPN, ENPC</b>	JSUMC
Family Nurse Practitioner (FNP)	<b>Donna Ciufo, R.N., MSN, FNP-BC</b>	<i>recertification</i> OMC
Inpatient Obstetrics	<b>Terri McIntosh-Mount, R.N., C, BSN, NCC</b>	JSUMC
	<b>Gloria Newman, R.N., C</b>	JSUMC
	<b>Sherry Timbrook, R.N., C</b>	JSUMC
International Board Certified Lactation Consultant (IBCLC)	<b>Joyce McKeever, R.N., MS, IBCLC</b>	<i>recertification</i> JSUMC
Licensed Social Worker (LSW)	<b>Kathleen A. Martin, R.N., MS, LSW</b>	OMC

# Exemplary Professional Practice



Medical Surgical Certification (BC)	<b>Christina Barrett, R.N., BSN, BC</b> <b>Francine Dygulski, R.N., C</b> <b>Ivy Gallera, R.N., C, BSN</b> <b>Donna Hawley, R.N., C, BSN</b> <b>Eduardo Iway, R.N., BC, BSN</b> <b>Jamie Kiernan, R.N., C, BSN</b> <b>Rosemary McCabe, R.N., C, MSN, FNP, APN</b> <b>Wendy Mehalick, R.N., C</b> <b>Agnes Aurea Mendoza, R.N., C</b> <b>Jasmin Osol, R.N., C, MSN</b> <b>Connie Sim, R.N., C, BSN, BC</b>	JSUMC JSUMC JSUMC RMC JSUMC JSUMC recertification JSUMC RMC JSUMC OMC JSUMC
Neonatal Intensive Care Certification (NIC)	<b>Patricia Freeman, R.N., C, NIC</b>	JSUMC
Nursing Professional Development	<b>Wendy Mancini, R.N., BC</b>	JSUMC
Oncology Nursing Certification (OCN)	<b>Marlene Navarro, R.N., MSN, AOCNP, ANP-BC, OCN</b> <b>Judith D. Sferlazzo, R.N., OCN</b>	recertification OMC RMC
Postanesthesia Nursing (CPAN)	<b>Ruthann Kosick, R.N., CPAN</b>	recertification JSUMC
Professional in Healthcare Quality (CPHQ)	<b>Kirsten Zabilowicz, R.N., CPHQ</b>	recertification JSUMC
Progressive Care Certification (PCCN)	<b>Anna Jocson, R.N., PCCN</b>	JSUMC
Psychiatric Nurse Certification	<b>Elizabeth M. Rotchford, R.N., C</b>	JSUMC
Therapeutic Massage Therapist	<b>Elizabeth Turchyn, R.N.</b>	MHCS
Wound Care Certified (WCC)	<b>Laurie Kendricks, LPN, WCC</b>	MNRS

## Professional Organizations

*Collaboration, interaction with peers, and leadership skill development are all fundamental to advancing the nursing profession.*

<b>Jinx Bediguan, R.N., BSN, CNOR</b>	JSUMC	Board of Directors and Membership Chairperson, Association of Perioperative Nurses Jersey Shore Chapter Board of Directors, National Association of Orthopaedic Nurses, Monmouth-Ocean Chapter
<b>Phyllis Begyn, R.N., MSN, OCN, CNA</b>	OMC	Administer of Web site, Oncology Nursing Society Coordinator, Virtual Community
<b>Susan Bennett, R.N., M.A., NEA, BC</b>	RMC	Board Member and Co-Chair, Advocacy Committee, ONE/NJ
<b>Rocel Besa, R.N., Ph.D, BC, ANCC</b>	RMC	Philippine Nurses Association, Monmouth Subchapter

# Exemplary Professional Practice



<b>Jane Bliss-Holtz, DNSc, R.N.-BC</b>	MH	Northeastern Representative, National Association of Catholic Nurses Editor, <i>Issues in Comprehensive Pediatric Nursing</i> Manuscript Reviewer, <i>Nursing Research</i>
<b>Jennifer B. Bradle, R.N., MSN, APN, CNS</b>	RMC	Reviewer, <i>American Journal of Maternal-Child Nursing</i>
<b>Kathy Brophy-Degrassie, R.N., ACLS, PALS, ENPC, TNCC, CEN</b>	OMC	Member, Emergency Nurses Association
<b>Sara Jane Campbell, R.N., BSN</b>	JSUMC	Secretary, Kean University BSN Association
<b>Christine Conner, R.N., CCNS, CCRN, FCCS</b>	OMC	Member, National Association of Clinical Nurse Specialists, Member, Society of Critical Care Medicine, Program Planning Committee Member, National and Jersey Shoreline Chapter of AACN
<b>Catherine DeAngelo, R.N., CGRN</b>	JSUMC	Board of Directors, Ocean-Monmouth SGNA Regional
<b>Diane Deitz, R.N., MSN, ACNP, CWON, CWS</b>	JSUMC	Chairperson, Wound Clinical Practice Subcommittee, Wound Ostomy Continence Society, Treasurer, WOCN-Garden State Affiliate
<b>Beverly J. Fey, R.N.</b>	JSUMC	Unit Representative, HPAE Local 5058
<b>Regina Foley, R.N., MBA, CHE</b>	OMC	President and Secretary, Friends of Dottie's House, President, Point Pleasant Foundation for Excellence in Education
<b>Michele E. Gaguski, R.N., MSN, AOCN, CHPN, APN-C</b>	OMC	Chair, Oncology Nursing Society Advanced Practice Nurse Practice Change Project Team, Chair, Oncology Nursing Society Chemotherapy and Biotherapy Course Slide Revision Team, Member, Oncology Nursing Certification Corporation (ONCC) Recognition Subcommittee
<b>Rebecca Graboso, R.N., MSN, CCRN, APN</b>	RMC	President, Philippine Nurses Association of New Jersey, Monmouth County Subchapter
<b>Linda Hassler, R.N., MS, GCNS-BC</b>	MH	Congress on Practice and Policy and Nominating Committee Region 6, NJSNA
<b>Joan Harvey, R.N., MSN, CCRN</b>	OMC	Planning Board Member, Nursing 2009 Symposium — The Conference for Clinical Excellence Peer Reviewer, Best Practice Information Sheet, "Nurse Led Interventions to Reduce Cardiac Risk Factors in Adults." The Joanna Briggs Institute Royal Adelaide Hospital, Adelaide, South Australia
<b>Christine Hedges, R.N., Ph.D., CCNS, ACNS-BC</b>	MH	Research Grants Review Panel, American Association of Critical Care Nurses, Department Editor, <i>AACN Advanced Critical Care</i> , Manuscript Reviewer, <i>Research in Nursing &amp; Health</i> and <i>American Nurse Today</i> , Case Report Poster Judge, Jersey Shore Annual Research Day

# Exemplary Professional Practice



<b>Amanda Hessels, R.N., MSN, MPH, CIC</b>	JSUMC	Recording Secretary, Association for Professionals in Infection Control
<b>Sharon S. Jones, R.N., MS, BC, CCRN</b>	OMC	President, Jersey Shoreline Chapter, American Association of Critical Care Nurses
<b>Ruthann Kosick, R.N.</b>	JSUMC	Vice President, Health Professionals and Allied Employees
<b>Patti Lucarelli, R.N., MSN, CPNP, APN-C</b>	JSUMC	Chair, NAPNAP, Chair, Arc of New Jersey Prevention Committee, Board Member, PCORE, Board Member, Child Care Resources, Editorial Board Member, <i>Ready, Set, Grow</i> and <i>Pediatric Nursing Journal</i> , Board Member, Regional Perinatal Consortium of Monmouth & Ocean Counties, Inc., Acelero Head Start Advisory Council Member
<b>Ramona Maltby, R.N., BSN, CGN</b>	OMC	Member, MSN Organization Kean University Member, NICHE
<b>Dawn Mans, R.N., AS</b>	JSUMC	Member, CPC Behavioral Health Care Committee
<b>Elisabeth Margl, R.N., BSN, CGRN</b>	OMC	Newsletter Editor, Society of Gastrointestinal Nurses & Associates, Ocean-Monmouth Chapter
<b>Terri McIntosh-Mount, R.N., RNC, NCC</b>	JSUMC	Chair, NJSNA, Political Action Committee, Member at Large, Congress on Policy and Practice
<b>Joyce McKeever, R.N., MS, IBCLC</b>	JSUMC	Conference Chair, Monmouth/ Ocean Breastfeeding Consortium
<b>Cynthia Monahan, R.N.</b>	MHR	Member, American Nurses Association, Member, American Academy of Otolaryngic Allergy, Member, Society of Otorhinolaryngology and Head-Neck Nurses, Inc.
<b>Marlene Navarro, R.N., MSN, AOCNP, ANP-BC, OCN</b>	OMC	President, Oncology Nursing Society, Central New Jersey Chapter
<b>Karen Nugent, R.N., CDN</b>	OMC	Vice President, Monmouth University Professional Nurses Association
<b>Eileen Oates, R.N., APNC, CEN</b>	JSUMC	Adjunct Faculty, Brookdale Community College
<b>Jasmin Osol, R.N., MSN, BSN, BC</b>	OMC	Member, Sigma Theta Tau
<b>Erin Reynolds, R.N., BSN, CNOR</b>	OMC	President, Jersey Shore Chapter of the Association of Operating Room Nurses

## *Exemplary Professional Practice*



<b>Richard Ridge, R.N., MBA, Ph.D., CNAA, BC</b>	MH	President, NJ Consortium of Nurse Educators, Associate Chair, Georgian Court-Meridian Health School of Nursing, Online Mentor, Thomas Edison State College, Editorial Advisory Board Member, <i>Men in Nursing Journal</i> , 2009 Item Writer Session Member, Nurse Executive Certification Exam, and 2010 Annual Meeting Program Planning Committee American Organization of Nurse Executives
<b>Elizabeth M. Rotchford, R.N.</b>	JSUMC	Board Member, Child Care Resources, Neptune, Annual Speaker, Monmouth County Vocational Allied Health Students “Crisis In the ED”
<b>Pamela Rossano, R.N., CBE</b>	RMC	Share Coordinator, March of Dimes Parent Mentor
<b>Denise Selleck, R.N., BSN</b>	RMC	Treasurer, Jersey Shoreline Chapter of the American Association of Critical Care Nurses
<b>Kimberly Simon, R.N., BSN, CIC</b>	RMC	President, Northern New Jersey Association for Professionals in Infection Control
<b>Judith Slover-Zipf, R.N., APRN, BC, BCADM, CDE</b>	JSUMC	Peer Reviewer, <i>Journal of the Academy of Nurse Practitioners</i> , Reviewer for Pilot CEU Programs Field, AANP
<b>Leslie Stewart, R.N., BA, CGRN, ABCGN</b>	JSUMC	National Treasurer, Society of Gastrointestinal Nurses and Associates, Board of Directors, Ocean-Monmouth SGNA Regional
<b>Mary Ellen Strozak, R.N., MS, BC, CCRN</b>	RMC	President, Jersey Shoreline Chapter of the American Association of Critical Care Nurses
<b>Ellen Sorensen, R.N., MSN, CNS, CCRN</b>	JSUMC	Editorial Advisory Board, <i>Nursing 2008 Critical Care</i>
<b>Alice Trembly, R.N., CCRN, APN-C</b>		Fellow, NETSMART Neurovascular Advanced Practice Nurse Fellowship Program, University of Arizona
<b>Trish Vigna, R.N., MSN, APN, CWCN, CCCN</b>	JSUMC	Nominating Committee Chairperson, Scholarship Committee Member, Acting Secretary, Education Committee Member, NJSNA Forum of Nurses in Advanced Practice (FNAP)
<b>Michael J. Warren, R.N., AD, CCRN, TNCC</b>	JSUMC	Chairman, Rapid Response Team and Ventilator Associated Pneumonia, Doctor’s Medical Center, Modesto, CA
<b>Teri Wurmser, R.N., Ph.D., MPH, NEA-BC</b>	MH	Magnet Site Appraiser, ANCC Magnet Program, Editorial Advisory Board & EBP Column Coordinator, <i>Nursing Management</i> , Editorial Advisory Board Member, <i>Teaching and Learning</i> , Grant Reviewer, Institute for Nursing, NJSNA



## The Meridian Health Institute for Evidence-Based Care

In 2008, Meridian Health launched its new Meridian Health Institute for Evidence-Based Care. Originally conceived by a team led by Dr. Richard Hader, and consisting of Ann May Center staff, Dr. Teri Wurmser, Dr. Jane Bliss-Holtz, Dr. Christine Hedges, and Dr. Richard Ridge, of the Department of Clinical Nursing Education, the model on which the Institute is based calls for the incorporation of the best scientific evidence, clinical expertise, and patient preferences and characteristics into patient care.

Led by Kathleen Russell Babin, R.N., MSN, the Institute is considered to be the only one in the nation to have an interdisciplinary approach to patient-centered care. Through the Institute, Meridian Health staff has access to assistance with translating evidence into practice, ranging from evaluating existing evidence to developing evidence-based guidelines and evaluating projected patient outcomes. By participating in evidence review teams, Meridian nurses join their colleagues in other health care disciplines to assure delivery of quality evidence-based, patient-centered care.

Over the past several years, nursing has been very active in promoting evidence-based practice through the activities of the Nursing Research Councils at each of the hospitals. Workshops featuring experts on evidence-based practice, including Drs. Bernadette Melnyk and Ellen Fineout-Overholt, offered Meridian nurses the opportunity to become proficient in the steps of knowledge translation. For the past several years, September has been designated as Nursing Research and Evidence-Based Practice Month throughout Meridian. The new Institute further supports all clinical professional staff through a coordinated interdisciplinary approach, ongoing education, and technical assistance.

Services of the Institute include coordinating evidence review teams, providing biostatistical expertise, developing mechanisms to translate results into practice, supporting dissemination of findings, and evaluating results. In 2008, the Institute launched the first in an ongoing series of Webinars, promoting the goal of providing education in evidence-based practice. In addition, an Evidence-Based Care Intranet site has been launched via the Meridian Health Dashboard and a newsletter, *Eye on Evidence*, has begun publication. A national conference, *Knowledge in Motion: Interdisciplinary Evidence-Based Care*, will be held in December by the Institute. From the initial planning through the launching of the Institute, Meridian nurses have been involved in the growth and development of evidence-based care, assuring our patients the best evidence-based health care possible.





## Publications

*The nursing profession only benefits from the sharing of medical knowledge. Meridian nurses help advance the profession by contributing extensively to many publications.*

<b>Jane Bliss-Holtz, DNSc, R.N.–BC</b>	MH	“PEARS and RRTs: Perfect together?” <i>Issues in Comprehensive Pediatric Nursing</i> , 31(4), i-ii. “Crisis management in schools.” <i>Issues in Comprehensive Pediatric Nursing</i> , 31(3), i-ii.
<b>Christine Conner, R.N., CCNS, CCRN, FCCS</b>	OMC	Interview: “Squads Help Save Lives in a Heartbeat: Hospitals Deploying Rapid Response Teams.” <i>The Star-Ledger</i> . (January 13, 2008). “It’s All About the Question.” <i>Inspire</i> , Meridian Health Research Newsletter. (Summer 2008).
<b>Catherine DeAngelo, R.N., CGRN</b>	JSUMC	“Core Curriculum: Gastroenterology Nursing.” <i>Endoscopy Reviewer</i> , Chapter 24.
<b>Diane Deitz, R.N., MSN, ACNP, CWON, CWS</b>	JSUMC	“The Future is Now: Wound Care Technology in the 21st Century.” <i>Nursing Management</i> . (October 2008).
<b>Michele E. Gaguski, R.N., MSN, AOCN, CHPN, APN-C</b>	OMC	“Lean on Me: Caring for Caregivers on the Cancer Journey.” <i>ONS CONNECT</i> . (November 2008). “The Power of Partnerships: ONS Chapter Reach Out to their Communities.” <i>ONS CONNECT</i> “Nanotechnology Treats Cancer at the Atomic Level.” <i>ONS CONNECT</i> . (July 2008). “Find the Leader in You: ONS Leadership Development Institute.” <i>ONS CONNECT</i> . (May 2008). “So They Think I Am an Expert?,” “So, You Want to be an Oncology Clinical Nurse Specialist?” ONS Publishing Division, Chapter 5. 49-65. “Is Your Patient Ready for Palliative Care?” <i>The Student Voice</i> (Oncology Nursing Society e-newsletter). (September 8, 2008). “Advances in Cancer Therapy: Targeted Agents.” <i>Nursing Management</i> . (May 2008).
<b>Kathleen Gelchion, R.N., MSN, AOCNS, CHPN</b>	RMC	“Combining PEP with High Tech: An Innovative Approach to Oncology Nursing Staff Competencies.” <i>Oncology Nursing Forum</i> , Volume 35, No. 6. (November 2008).

# New Knowledge, Innovations, and Improvements



**Richard Hader, R.N., Ph.D., FAAN, CNE, CPHQ**

- MH “No need to hit the panic button.”  
*Nursing Management*, (39), 12.  
“A little humility goes a long way.”  
*Nursing Management*, (39), 11.  
“Nourish an evolutionary culture.”  
*Nursing Management*, (39), 10.  
“Seize the opportunity to network and learn.”  
*Nursing Management*, (39), 9.  
“Strategies for profitable growth.”  
*Nursing Management*, (39), 9, p. 22-27.  
“Pay for performance a slippery slope?”  
*Nursing Management*, (39), 8.  
“Workplace Violence Survey 2008.”  
*Nursing Management*, (39), 7, p. 13-19.  
“Value the contributions of all.”  
*Nursing Management*, (39), 7.  
“I heard it through the grapevine.”  
*Nursing Management*, (39), 6.  
“Are you really the leader?” *Nursing Management*, (39), 5.  
“Disciplinary action: A tedious task.”  
*Nursing Management*, (39), 4.  
“Not Sure? Don’t be afraid to ask.”  
*Nursing Management*, (39), 3.  
“Balance organizational priorities between patients and staff.” *Nursing Management*, (39), 2.  
“Know your targets, then align your goals.”  
*Nursing Management*, (39), 1.

**Christine Hedges, R.N., Ph.D., CCNS, ACNS-BC**

- MH “A Comparison of Sleep and Mood in On-Pump and Off-Pump Coronary Artery Bypass Patients.”  
*American Journal of Critical Care*, 17, 133-141.  
“What’s in Your Toolbox? Considerations When Selecting and Evaluating Instruments in Clinical Research.”  
*AACN Advanced Critical Care*, 19, 19-22.

**Patti Lucarelli, R.N., MSN, CPNP, APN-C**

- JSUMC “Speak Up and Listen: Communication is Key in Preventing Substance Abuse.” *Kid Health Matters*. (Spring 2008).  
“Help! My Child Was Sent Home With...”  
*Ready, Set, Grow*. (Fall 2008).  
“Thinking Outside the Exam Room: Accessing Community Resources for Patients in Ambulatory Care Settings.”  
*Nursing Economics*. (July/August 2008).  
“What’s Stress Got to Do With It?” *ADVANCE for Nurses*, Special Annual Issue for New Grads.

**Marlene Navarro, R.N., MSN, AOCNP, ANP-BC, OCN**

- OMC “What Does Your Institution Offer to Promote Work-Life Balance?” *ONS CONNECT*. (June 5, 2008).  
“Oncology Staff Come Together for Annual Retreat.”  
*ONS CONNECT*, 14. (April 2008).

# New Knowledge, Innovations, and Improvements



<b>Richard Ridge, R.N., MBA, Ph.D., CNAA, BC</b>	MH	“Patient Safety: Anticoagulants.” <i>Nursing 2008</i> 38(8):22-23. “Doing Right to Prevent Wrong-Site Surgery.” <i>Nursing 2008</i> 38(3):24-25.
<b>Leslie Stewart, R.N., BA, CGRN, ABCGN</b>	JSUMC	Core Curriculum: <i>Gastroenterology Nursing</i> . Chapter 24, Endoscopy. Contributing Editor: SedationFacts.org.
<b>Teri Wurmser, R.N., Ph.D., MPH, NEA-BC</b>	MH	“Cultivating Practice Education Partnerships.” <i>Nursing Management</i> 39(3), 44-48. (March 2008).

## Research

*The key to providing exceptional patient care is the continuous effort to define and implement best practices. Through research, Meridian nurses strive for the knowledge and evidence that improves outcomes and the quality of care.*

<b>Christina Barrett, R.N., BSN, BC</b>	JSUMC	Data Collection and Analysis, Performance Improvement Check List, Plan/Do/Check/Act
<b>Rocel Besa, R.N., Ph.D, BC, ANCC</b>	RMC	Principal Investigator, Perceived Barriers on the Utilization of the National Institute of Health Stroke Scale (NIHSS) Among R.N. and ED, ICU, and Stroke Unit of Riverview Medical Center
<b>Jane Bliss-Holtz, DNSc, R.N.–BC</b>	MH	Co-Principal Investigator, A Comparison of Noise Perception, Mood, Fatigue, Musculoskeletal Symptoms, Slips, and Trips Principal Investigator, Perceptions of Change in Environmental Work Factors in a Newly-Engineered Work Environment Principal Investigator, Pre- and Post- Educational Assessment of Computer Literacy in Nurses
<b>Jennifer Bradle, R.N., MSN, APN, CNS</b>	RMC	Co-Investigator, Pre-Discharge Transcutaneous Bilitubin (TCB) in the Predictions of Neonatal Re-admission Due to Neonatal Hyberbilirubinemia
<b>Beverly J. Fey, R.N.</b>	JSUMC	Data Collector, Ventilator Associated Pneumonia Study Date Collector, Central Line Infection Risk Study
<b>Anselma S. Gabudao, R.N., CCRN</b>	OMC	Principal Investigator, Coping Styles of Graduate Students Enrolled in Various Nursing Programs
<b>Traci Grotto-Ross, R.N., BSN</b>	JSUMC	Data Collector, SCIP
<b>Christine Hedges, R.N., Ph.D., CCNS, ACNS-BC</b>	MH	Site Coordinator, A Multifaceted Approach to Reducing Medication Errors Member, The Meridian Health Pebble Research Team Chair, Nursing Research Council Member, The Meridian Health IRB

*New Knowledge, Innovations, and Improvements*



<b>Amanda Hessels, R.N., MSN, MPH, CIC</b>	JSUMC	Investigator, Group B Strep Cluster Investigation
<b>Patti Lucarelli, R.N., MSN, CPNP, APN-C</b>	JSUMC	Case Management & Care Coordination, Medical/ American Academy of Pediatrics CATCH Grant Participant, LIFT Obesity Project Participant, Asthma Performance Improvement Project
<b>Joyce McKeever, R.N., MS, IBCLC</b>	JSUMC	Data Collector, Effects of Three Types of Hospital Gift Bags on Duration of Breastfeeding
<b>Loretta Ninivaggi, R.N., MSN, CDE, BC</b>	JSUMC	Coordinator, Clinical Trial to Evaluate the Safety and Tolerability of 24 Weeks of Treatment with Vildagliptin Versus Sitagliptin in Patients with Type 2 Diabetes and Severe Renal Insufficiency
<b>Jasmin Osol, R.N., MSN, BC</b>	OMC	Researcher, Coping Styles of Nurses in Various Nursing Programs
<b>Meaghan Peters, R.N., AS, PCT</b>	JSUMC	Participant, Pain Management Study on Mehandru 6
<b>Jeana Reyes, R.N., BSN, CCRN</b>	JSUMC	Data Collector, Fast Track Weaning and Pressure Ulcers Committee Member, Braden Scale Prevention Protocol
<b>Judith Slover-Zipf, R.N., APRN, BC, BCADM, CDE</b>	JSUMC	Sub-Investigator & Clinical Research Coordinator, LAF Trial for Novartis Pharmaceutical Company
<b>Sherry Timbrook, R.N., RNC</b>	JSUMC	Data Collector, Effects of Three Types of Hospital Gift Bags on Duration of Breastfeeding
<b>Teri Wurmser, R.N., Ph.D., MPH, NEA-BC</b>	MH	Wurmser, T., Bliss-Holtz, J., Hedges, C. "Resource Center for Nursing Career Advancement Competing Continuation: HRSA, \$885,000 July 2008 to June 2011
<b>Roselyn Young, R.N., MSN</b>	JSUMC	Data Collector, Effects of Three Types of Hospital Gift Bags on Duration of Breastfeeding



## Foundation

*The Meridian Ann May Center for Nursing believes that education is a life-long process. That's why the Center offers many generously given scholarships for team member students who are preparing to enter the nursing profession, as well as nurses who are seeking advanced degrees.*



## Scholarships & Awards Presentation

Meridian Health President and CEO, John Lloyd, presented the President's Award scholarships to nurses at the Meridian Health annual meeting.

Left to Right: John Lloyd, Melissa Jager (SRI), Roxanne Reslier (JSUMC), Richard Penalosa (JSUMC), Nicole Ortiz (OMC), and Ruthanne Kurtz (RMC).

## The Lloyd Family Scholarship

The Lloyd Family Scholarship is awarded annually to Meridian nurses who exemplify the ideals and spirit of the Meridian Way, and who have made significant contributions to Meridian Health or the community.

John and Maureen Lloyd and their son, Dylan, present the first annual Lloyd Family Scholarship to Ruthanne Kosick (JSUMC) at the Nightingale ceremony during Nurses Week.



# Foundation



## **Elizabeth I. Kellogg Award**

This award was established in 1990 through the generosity of the Kellogg Family to acknowledge the contribution nursing makes in providing quality care. To honor the memory of Mrs. Kellogg, this award is granted annually to nurses who work at each of the Meridian hospitals.

Ocean Medical Center: (Front Left to Right) Sharon Jones, Messalina Dy, Susan Shenouski, and Christine Conner. (Rear Left to Right) Donna Ciufo, senior manager of Patient Services; Regina Foley, vice president and chief nurse executive; and Peter Daniels, president of Ocean Medical Center.



**[MeridianHealth.com](http://MeridianHealth.com)**

**Jersey Shore University Medical Center**

**Ocean Medical Center**

**Riverview Medical Center**

**K. Hovnanian Children's Hospital**

**Meridian Partner Companies**

